

BRANTFORD F

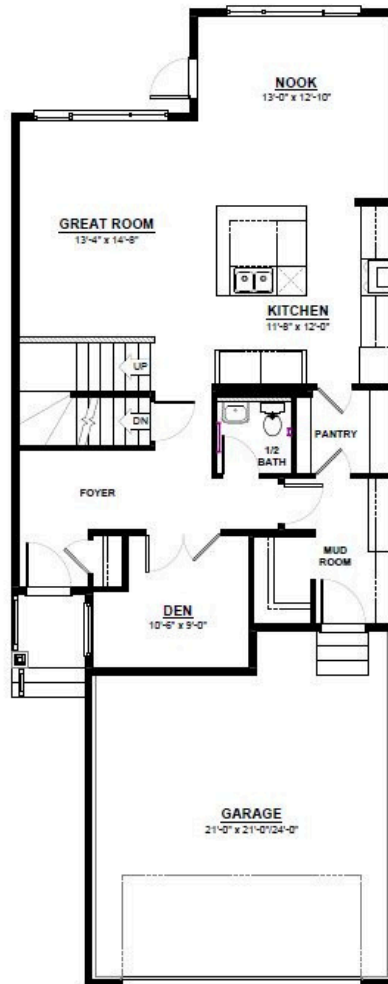
FRONT ATTACHED 26'
SINGLE FAMILY HOME

2,283 SQ FT
3 Bedroom
2.5 Bathrooms



FEATURES

- 2 Storey
- 2nd Floor Laundry
- Quartz Countertops Throughout
- Large Walk-Through Pantry & Mudroom
- Walk-in Closet at Front Entry
- Main Floor Den/Office
- Massive Chefs Kitchen with Built in Oven & Microwave
- 2nd Floor Bonus Room
- Open to Below Great Room
- Oversized Master Bedroom with Sitting Area
- 5 Piece Ensuite
- Walk-in Closet



MAIN FLOOR

1,030 SQ.FT
(9 FT. CEILINGS)



2ND FLOOR

1,253 SQ.FT
(8 FT. CEILINGS)



CITY HOMES

This plan is property of City Homes. All rights reserved, including the right of reproduction in whole or in part. Image shown is an artist rendering, dimensions shown are approximate and are subject to change. Square footage may vary based on elevation. Please consult your City Homes Sales Consultant. Blacklines revised August 18th, 2021.