

# BRAMPTON P

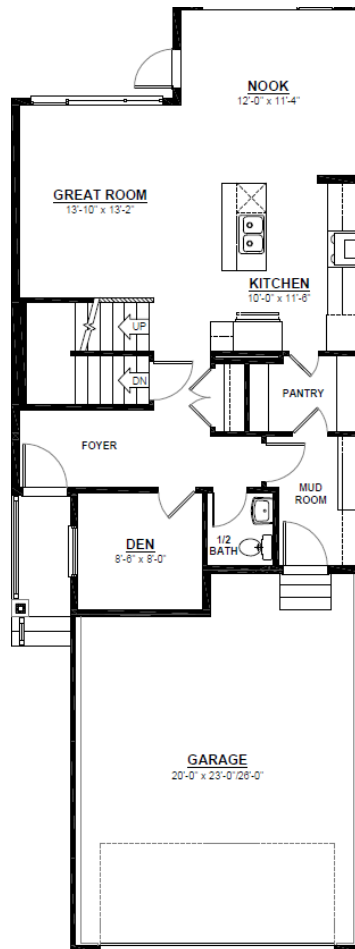
FRONT ATTACHED 24'  
SINGLE FAMILY HOME

1,956 SQ FT  
3 Bedroom  
2.5 Bathrooms



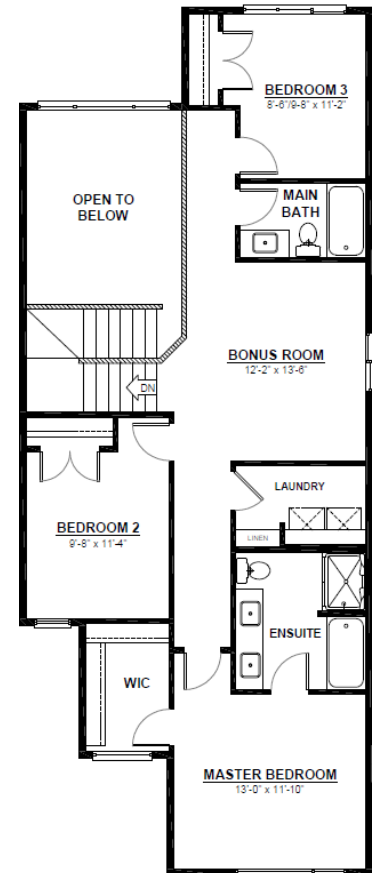
## FEATURES

- 2 Storey
- 2nd Floor Laundry
- Quartz Countertops Throughout
- Large Walk-Through Pantry & Mudroom
- Walk-in Closet at Front Entry
- Main Floor Den/Office
- Massive Chefs Kitchen with Built in Oven & Microwave
- 2nd Floor Bonus Room
- Open to Below Great Room
- Oversized Master Bedroom
- 5 Piece Ensuite with Walk-in Closet



### MAIN FLOOR

872 SQ.FT  
(9 FT. CEILINGS)



### 2ND FLOOR

1,084 SQ.FT  
(8 FT. CEILINGS)



CITY HOMES

This plan is property of City Homes. All rights reserved, including the right of reproduction in whole or in part. Image shown is an artist rendering, dimensions shown are approximate and are subject to change. Square footage may vary based on elevation. Please consult your City Homes Sales Consultant. Blacklines revised April 13, 2023.