

# SICILY H

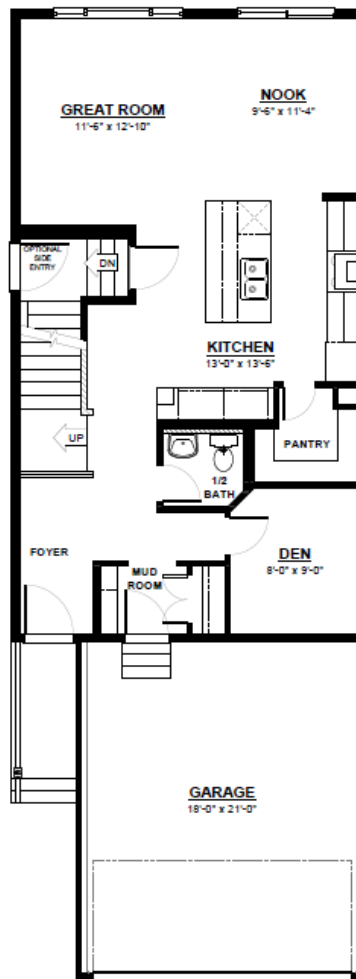
FRONT ATTACHED 22'  
SINGLE FAMILY HOME

2,049 SQ FT  
3 Bedroom  
2.5 Bathrooms



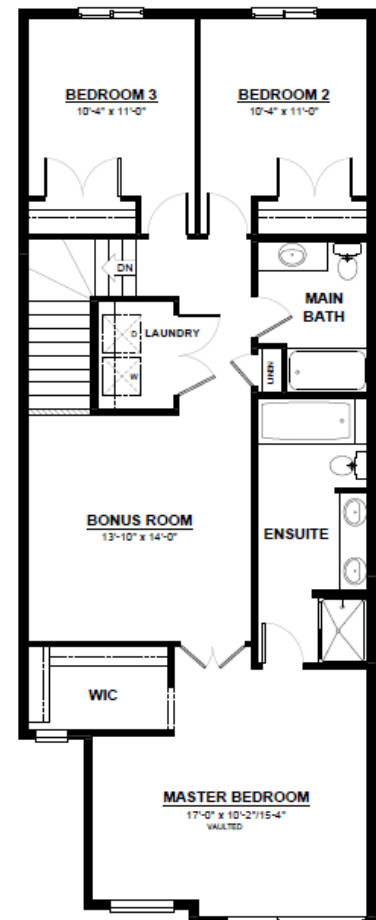
## FEATURES

- 2 Storey
- 3 Bedrooms
- 2.5 Bathrooms
- 5 Piece Ensuite
- 2nd Floor Laundry
- Large Master Walk-In Closet
- Main Floor Den
- Spacious Pantry



## MAIN FLOOR

858 SQ.FT  
(9 FT. CEILINGS)



## 2ND FLOOR

1,191 SQ.FT  
(8 FT. CEILINGS)

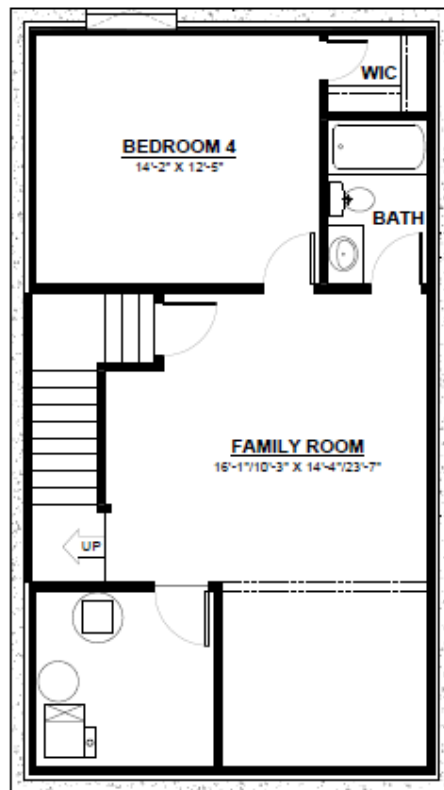


This plan is property of City Homes. All rights reserved, including the right of reproduction in whole or in part. Image shown is an artist rendering, dimensions shown are approximate and are subject to change. Square footage may vary based on elevation. Please consult your City Homes Sales Consultant. Blacklines revised August 31st, 2021.

# SICILY H

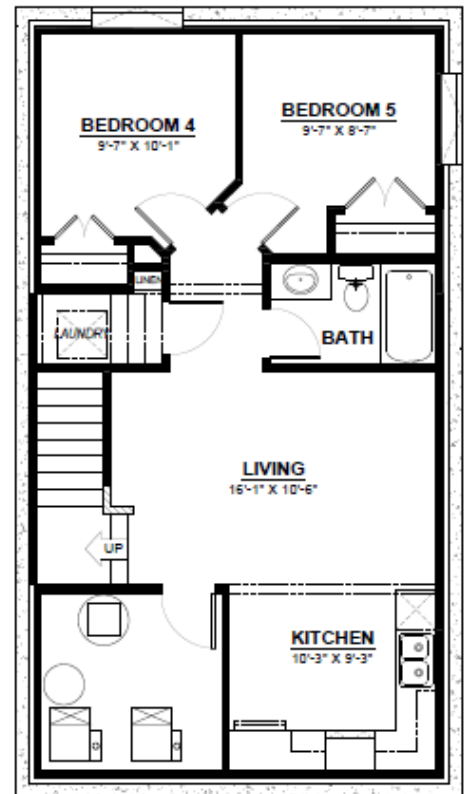
## OPTIONAL BASEMENT

Additional Bedroom/s  
Large Living Space  
Full Bathroom



### BASEMENT

690 SQ.FT  
(8 FT. FOUNDATION)



### BASEMENT SUITE

690 SQ.FT  
(9 FT. FOUNDATION)  
(NON ZLL ONLY)



This plan is property of City Homes. All rights reserved, including the right of reproduction in whole or in part. Image shown is an artist rendering, dimensions shown are approximate and are subject to change. Square footage may vary based on elevation. Please consult your City Homes Sales Consultant. Blacklines revised August 31st, 2021.