

VALENCIA

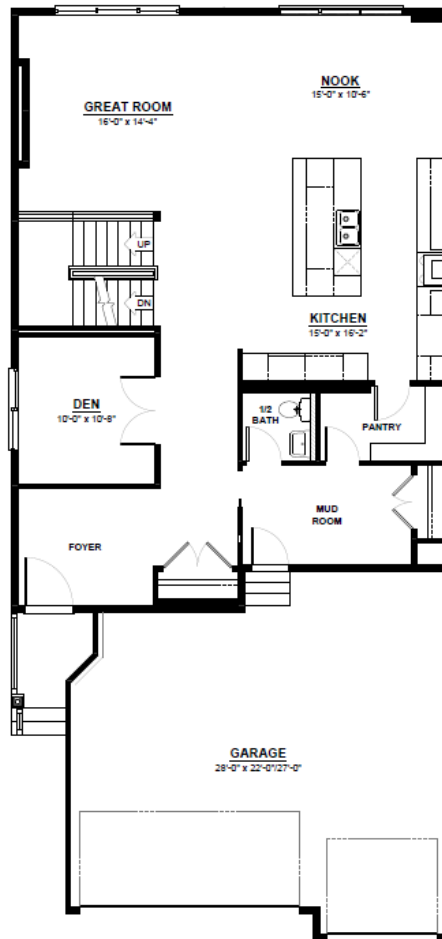
FRONT ATTACHED 32'
SINGLE FAMILY HOME

2,872 SQ FT
3 Bedroom
2.5 Bathrooms



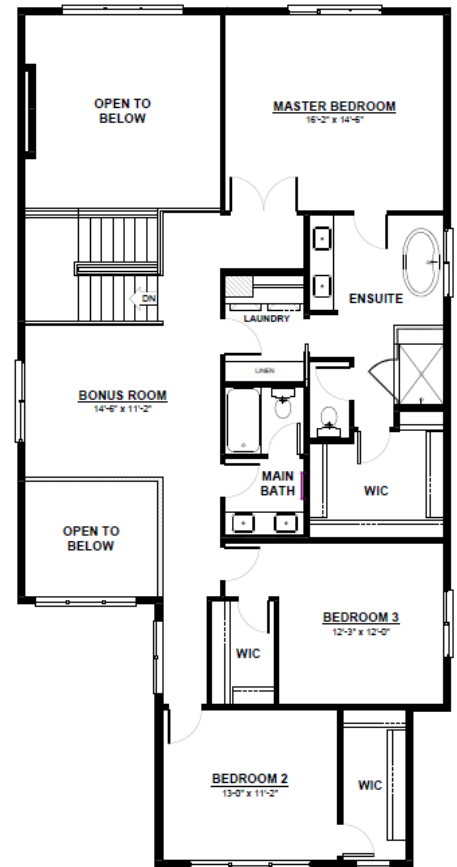
FEATURES

- 2 Storey
- 3 Bedrooms
- 2.5 Bathrooms
- Main Floor Den
- Walk Through Pantry
- Open To Above Foyer
- Open To Above Great Room
- Spacious Bonus Room
- Walk In Closets In All Bedrooms
- 5 Piece Ensuite



MAIN FLOOR

1,362 SQ.FT
(9 FT. CEILINGS)



2ND FLOOR

1,510 SQ.FT
(8 FT. CEILINGS)



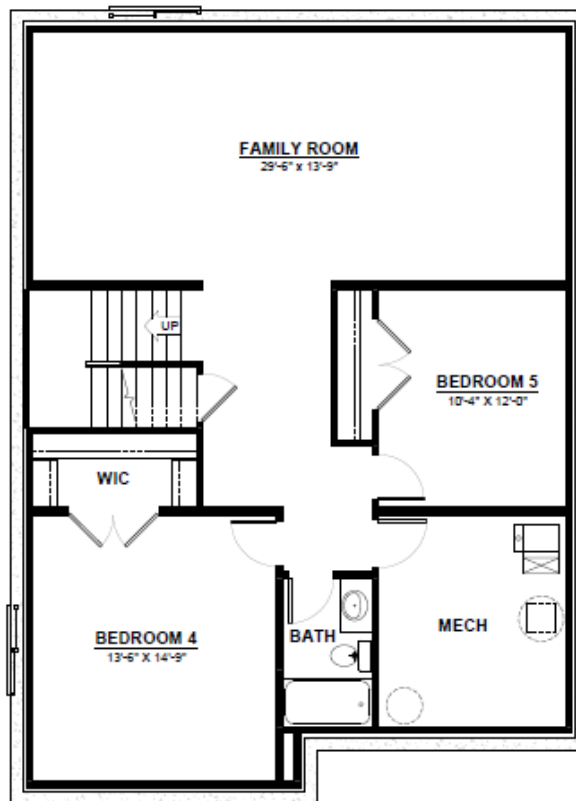
CITY HOMES

This plan is property of City Homes. All rights reserved, including the right of reproduction in whole or in part. Image shown is an artist rendering, dimensions shown are approximate and are subject to change. Square footage may vary based on elevation. Please consult your City Homes Sales Consultant. Blacklines revised August 31st, 2021.

VALENCIA

OPTIONAL BASEMENT

- 2 Additional Bedrooms
- Large Living Space
- Full Bathroom



BASEMENT

1,129 SQ.FT
(9 FT. FOUNDATION)



This plan is property of City Homes. All rights reserved, including the right of reproduction in whole or in part. Image shown is an artist rendering, dimensions shown are approximate and are subject to change. Square footage may vary based on elevation. Please consult your City Homes Sales Consultant. Blacklines revised August 31st, 2021.