

# VALENCIA

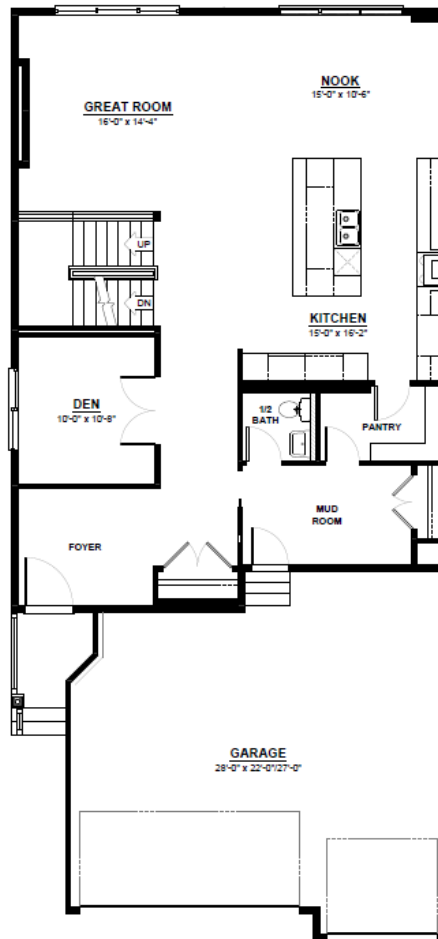
FRONT ATTACHED 32'  
SINGLE FAMILY HOME

2,872 SQ FT  
3 Bedroom  
2.5 Bathrooms



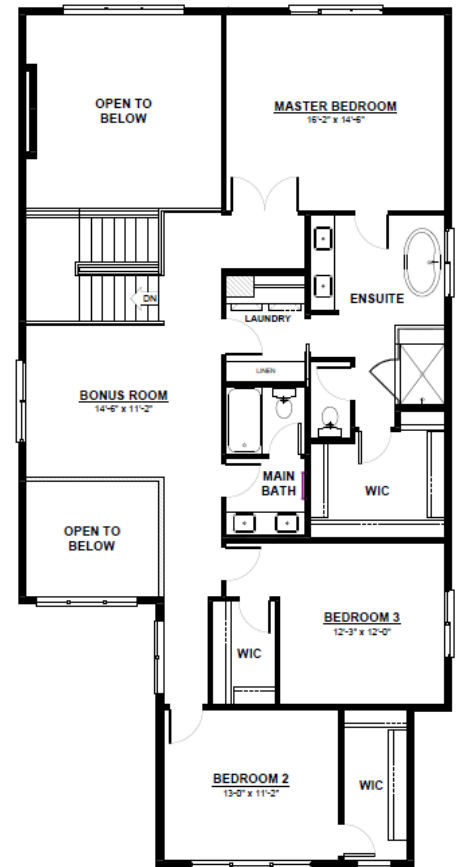
## FEATURES

- 2 Storey
- 2nd Floor Laundry
- Quartz Countertops Throughout
- Main Floor Den
- Walk Through Pantry & Mudroom
- Massive Chefs Kitchen with Built in Oven & Microwave
- 2nd Floor Bonus Room
- Open to Below at the Main Entrance & Great Room
- Dual Sinks in Main Bathroom
- Walk-in Closets in Bedroom 2 & 3
- Oversized Master Bedroom
- 5 Piece Ensuite & Walk-in Closet
- Ensuite Access to Laundry Room



### MAIN FLOOR

1,362 SQ.FT  
(9 FT. CEILINGS)



### 2ND FLOOR

1,510 SQ.FT  
(8 FT. CEILINGS)



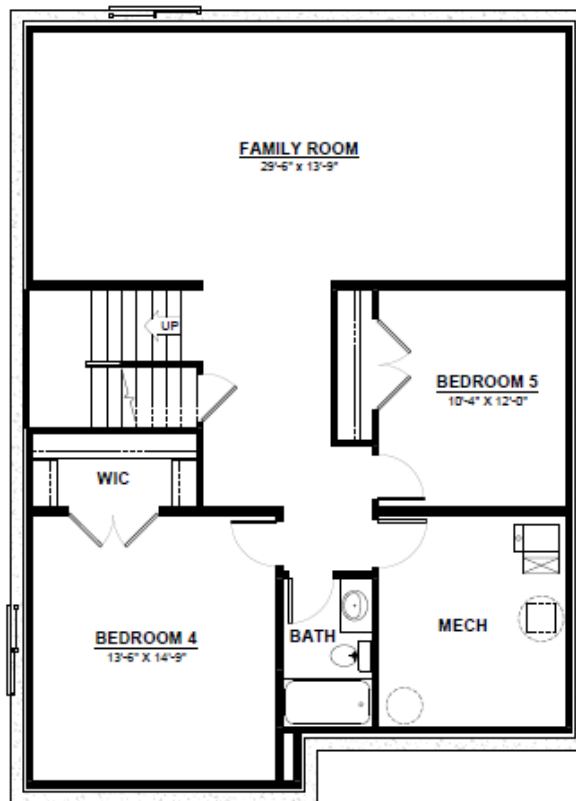
CITY HOMES

This plan is property of City Homes. All rights reserved, including the right of reproduction in whole or in part. Image shown is an artist rendering, dimensions shown are approximate and are subject to change. Square footage may vary based on elevation. Please consult your City Homes Sales Consultant. Blacklines revised August 31st, 2021.

# VALENCIA

## OPTIONAL BASEMENT

2 Additional Bedrooms  
Large Living Space  
Full Bathroom



## BASEMENT

1,129 SQ.FT  
(9 FT. FOUNDATION)



This plan is property of City Homes. All rights reserved, including the right of reproduction in whole or in part. Image shown is an artist rendering, dimensions shown are approximate and are subject to change. Square footage may vary based on elevation. Please consult your City Homes Sales Consultant. Blacklines revised August 31st, 2021.