

TRINITY MFH

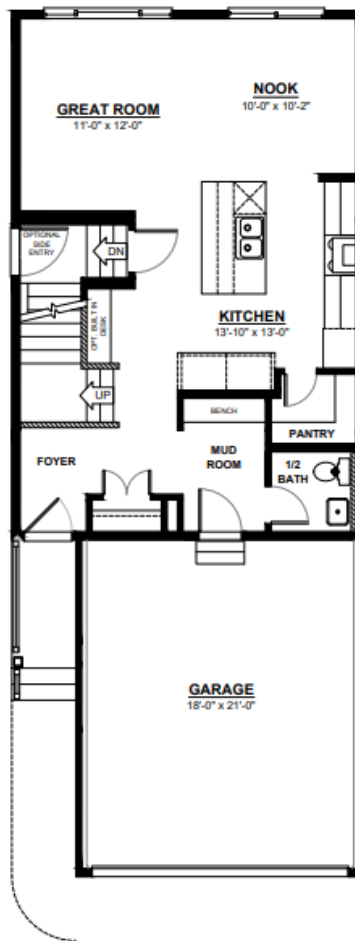
FRONT ATTACHED 22'
SINGLE FAMILY HOME

1,658 SQ FT
3 Bedroom
2.5 Bathrooms



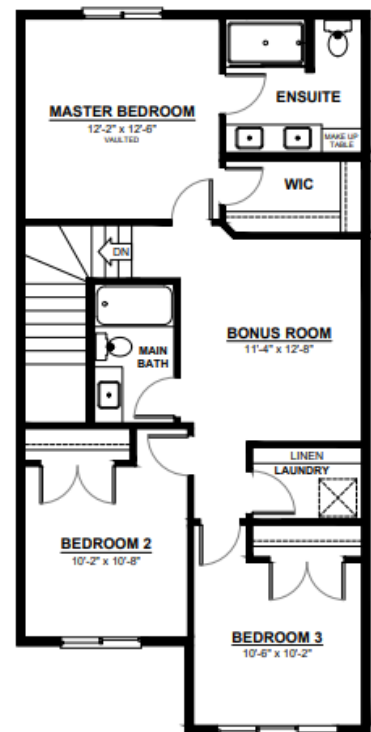
FEATURES

- 2 Storey
- 2nd Floor Laundry
- Quartz Countertops Throughout
- Large Walk-in Pantry
- Mudroom & Bench Seat
- Massive Chefs Kitchen with Built in Oven & Microwave
- Optional Main Floor Built in Desk
- 2nd Floor Bonus Room
- Oversized Master Bedroom
- 4 Piece Ensuite with Makeup Table
- Large Master Walk-in Closet



MAIN FLOOR

726 SQ.FT
(9 FT. CEILINGS)



2ND FLOOR

932 SQ.FT
(8 FT. CEILINGS)

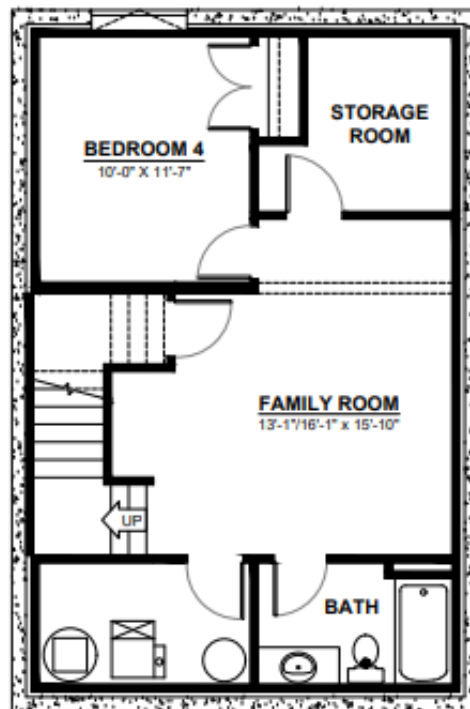


This plan is property of City Homes. All rights reserved, including the right of reproduction in whole or in part. Image shown is an artist rendering, dimensions shown are approximate and are subject to change. Square footage may vary based on elevation. Please consult your City Homes Sales Consultant. Blacklines revised August 31st, 2021.

TRINITY MFH

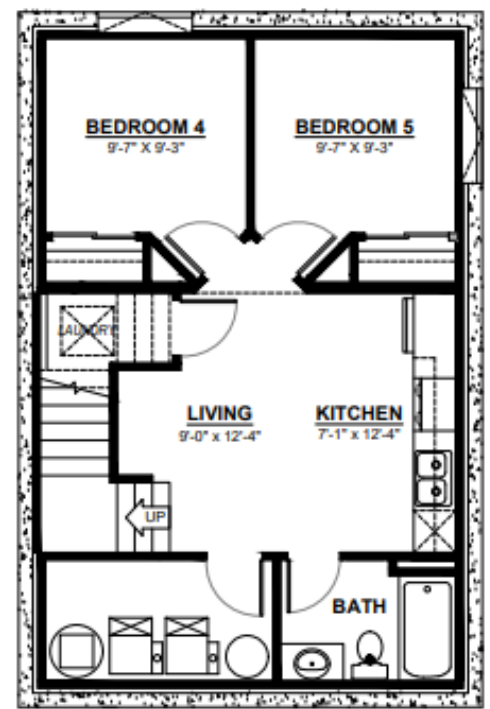
OPTIONAL BASEMENT

Additional Bedroom/s
Large Living Space
Full Bathroom



BASEMENT

515 SQ.FT
(8 FT. FOUNDATION)



BASEMENT SUITE

582 SQ.FT
(9 FT. FOUNDATION)
(NON ZLL ONLY)



This plan is property of City Homes. All rights reserved, including the right of reproduction in whole or in part. Image shown is an artist rendering, dimensions shown are approximate and are subject to change. Square footage may vary based on elevation. Please consult your City Homes Sales Consultant. Blacklines revised August 31st, 2021.