

# SICILY H

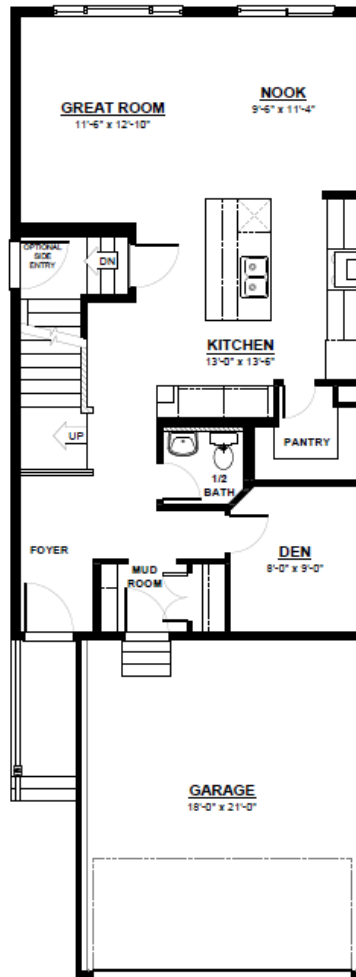
FRONT ATTACHED 22'  
SINGLE FAMILY HOME

2,049 SQ FT  
3 Bedroom  
2.5 Bathrooms



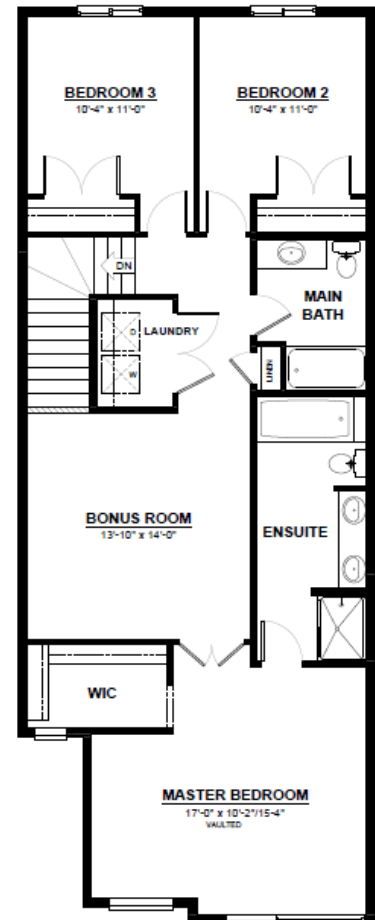
## FEATURES

- 2 Storey
- 2nd Floor Laundry
- Quartz Countertops Throughout
- Large Walk in Pantry
- Massive Chefs Kitchen with Built in Oven & Microwave
- Main Floor Bonus Room
- Second Floor Bonus Room
- Oversized Master Bedroom with Vaulted Ceilings
- 5 Piece Ensuite
- Large Master Walk-in Closet



## MAIN FLOOR

858 SQ.FT  
(9 FT. CEILINGS)



## 2ND FLOOR

1,191 SQ.FT  
(8 FT. CEILINGS)



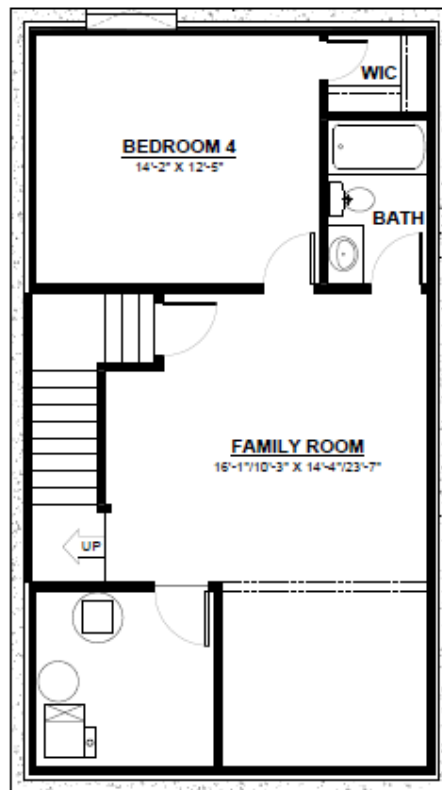
CITY HOMES

This plan is property of City Homes. All rights reserved, including the right of reproduction in whole or in part. Image shown is an artist rendering, dimensions shown are approximate and are subject to change. Square footage may vary based on elevation. Please consult your City Homes Sales Consultant. Blacklines revised August 31st, 2021.

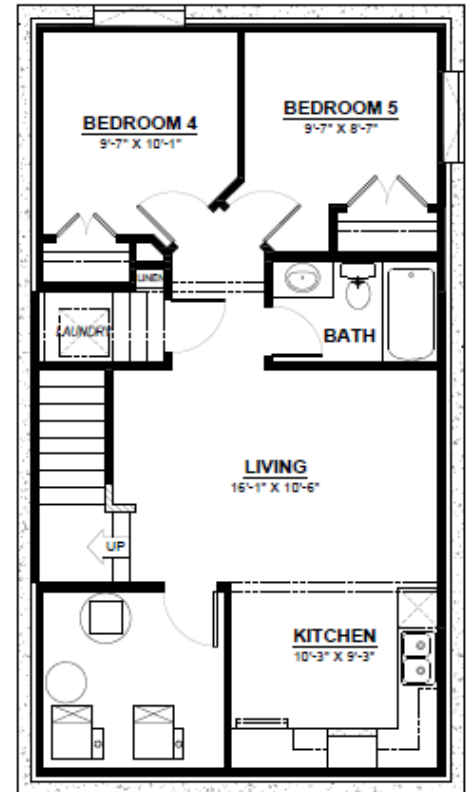
# SICILY H

## OPTIONAL BASEMENT

Additional Bedroom/s  
Large Living Space  
Full Bathroom



**BASEMENT**  
690 SQ.FT  
(8 FT. FOUNDATION)



**BASEMENT SUITE**  
690 SQ.FT  
(9 FT. FOUNDATION)  
(NON ZLL ONLY)



This plan is property of City Homes. All rights reserved, including the right of reproduction in whole or in part. Image shown is an artist rendering, dimensions shown are approximate and are subject to change. Square footage may vary based on elevation. Please consult your City Homes Sales Consultant. Blacklines revised August 31st, 2021.