

MILAN MFH

FRONT ATTACHED 28'
SINGLE FAMILY HOME

2,602 SQ FT

4 Bedroom

2.5 Bathrooms



FEATURES

2 Storey

2nd Floor Laundry

Quartz Countertops Throughout

Large Walk-Through Pantry &
Mudroom

Massive Chefs Kitchen with Built in
Oven & Microwave

Extended Cabinetry into Nook
Electric Fireplace with Build out in
Great Room

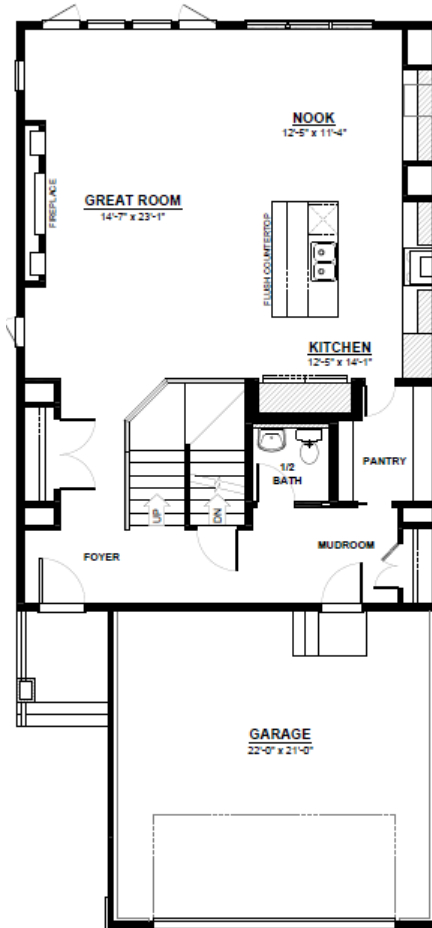
Centralized Staircase

2nd Floor Bonus Room with
Optional Tech Desk Area

Dual Sinks in Main Bathroom

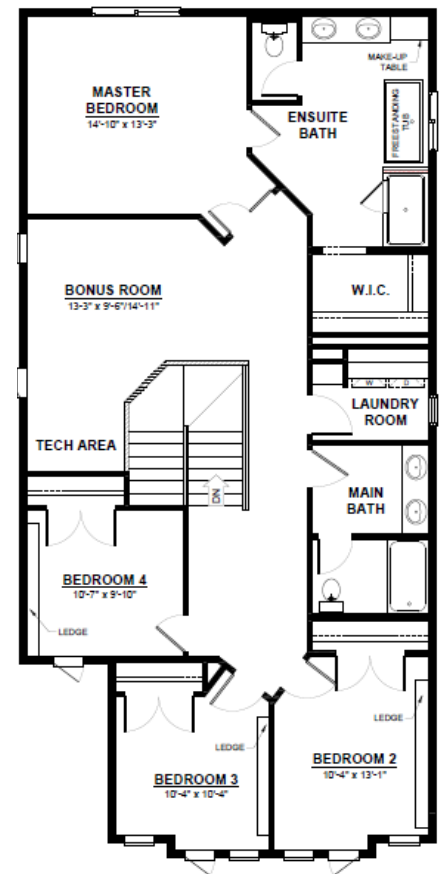
Oversized Master Bedroom

5 Piece Ensuite with Walk-in Closet



MAIN FLOOR

1,092 SQ.FT
(9 FT. CEILINGS)



2ND FLOOR

1,510 SQ.FT
(8 FT. CEILINGS)



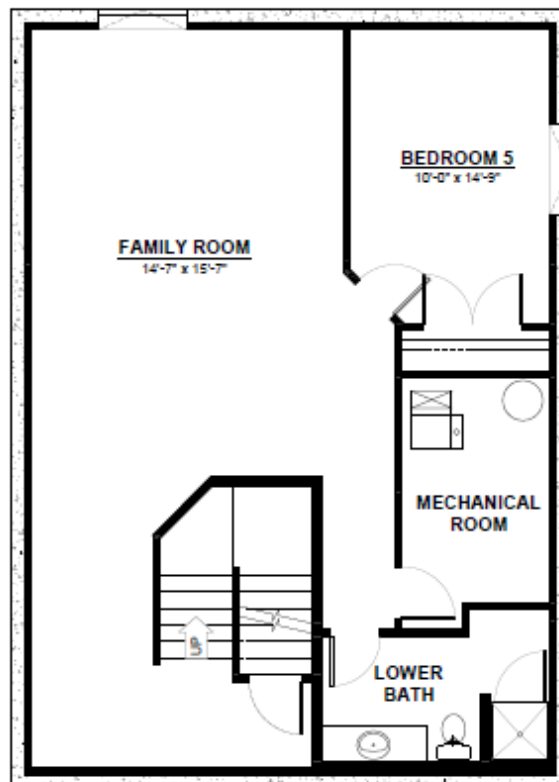
CITY HOMES

This plan is property of City Homes. All rights reserved, including the right of reproduction in whole or in part. Image shown is an artist rendering, dimensions shown are approximate and are subject to change. Square footage may vary based on elevation. Please consult your City Homes Sales Consultant. Blacklines revised September 1st, 2021.

MILAN MFH

OPTIONAL BASEMENT

Additional Bedroom
Large Living Space
Full Bathroom



BASEMENT

912 SQ.FT
(8 FT. FOUNDATION)



This plan is property of City Homes. All rights reserved, including the right of reproduction in whole or in part. Image shown is an artist rendering, dimensions shown are approximate and are subject to change. Square footage may vary based on elevation. Please consult your City Homes Sales Consultant. Blacklines revised September 1st, 2021.