

# BENTLEY H

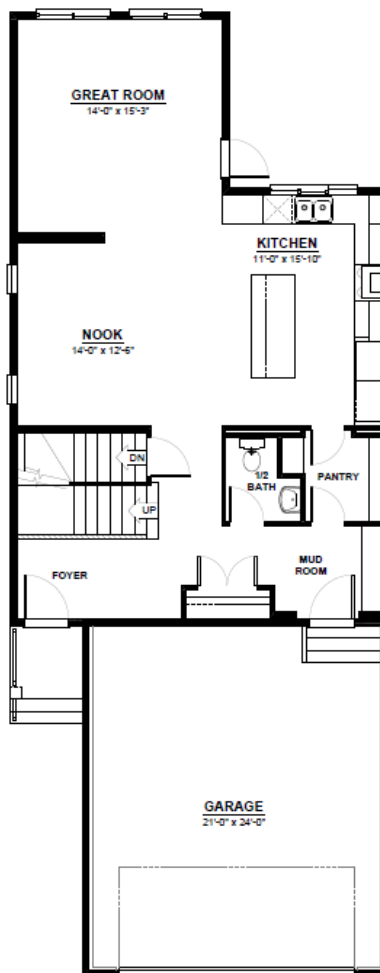
FRONT ATTACHED 26'  
SINGLE FAMILY HOME

2,167 SQ FT  
3 Bedroom  
2.5 Bathrooms



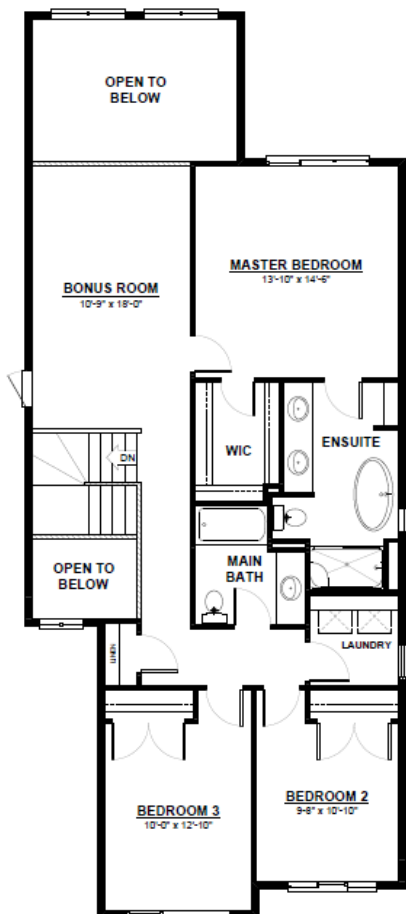
## FEATURES

- 2 Storey
- 2nd Floor Laundry
- Quartz Countertops Throughout
- Large Walk-Through Pantry
- Mudroom with Bench & Cubbies
- Massive Chefs Kitchen with Built in Oven & Microwave
- 2nd Floor Bonus Room with Open to Below
- Open to Below Staircase
- Oversized Master Bedroom
- 5 Piece Ensuite with Walk-in Closet



## MAIN FLOOR

960 SQ.FT  
(9 FT. CEILINGS)



## 2ND FLOOR

1,207 SQ.FT  
(8 FT. CEILINGS)



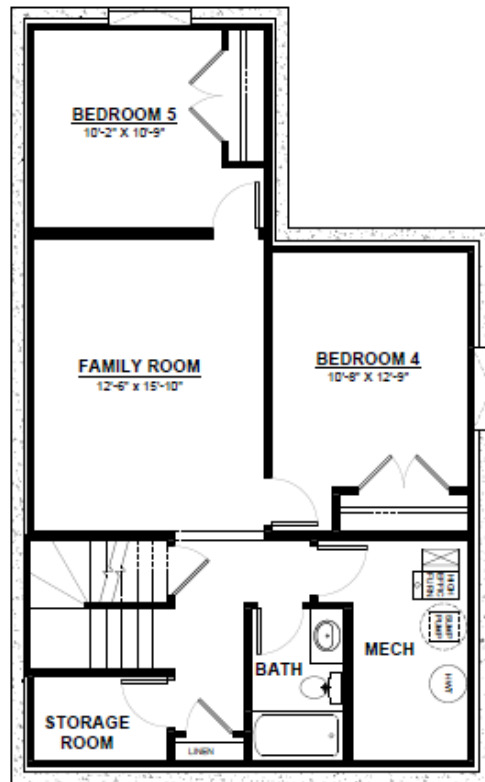
CITY HOMES

This plan is property of City Homes. All rights reserved, including the right of reproduction in whole or in part. Image shown is an artist rendering, dimensions shown are approximate and are subject to change. Square footage may vary based on elevation. Please consult your City Homes Sales Consultant. Blacklines revised August 31st, 2021.

# BENTLEY H

## OPTIONAL BASEMENT

2 Additional Bedrooms  
Large Living Space  
Full Bathroom  
Storage Space



## BASEMENT

738 SQ.FT  
(8 FT. FOUNDATION)



This plan is property of City Homes. All rights reserved, including the right of reproduction in whole or in part. Image shown is an artist rendering, dimensions shown are approximate and are subject to change. Square footage may vary based on elevation. Please consult your City Homes Sales Consultant. Blacklines revised August 31st, 2021.