

# TOFINO P

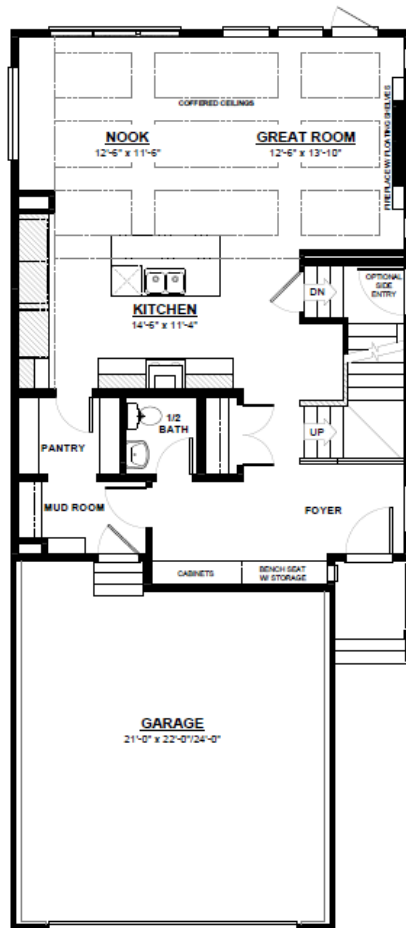
FRONT ATTACHED 26'  
SINGLE FAMILY HOME

2,164 SQ FT  
3 Bedroom  
2.5 Bathrooms



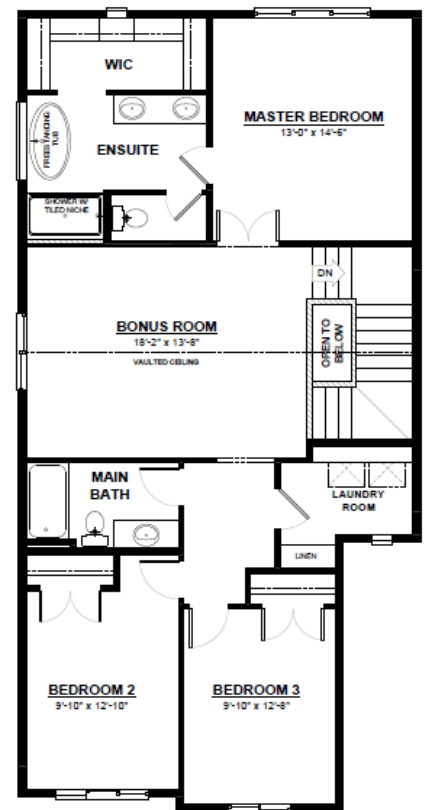
## FEATURES

2 Storey  
3 Bedrooms  
2.5 Bathrooms  
2nd Floor Laundry  
Vaulted Bonus Room  
Main Floor Coffered Ceilings  
5 Piece Ensuite with Walk-in Closet



### MAIN FLOOR

922 SQ.FT  
(9 FT. CEILINGS)



### 2ND FLOOR

1,242 SQ.FT  
(8 FT. CEILINGS)



CITY HOMES

This plan is property of City Homes. All rights reserved, including the right of reproduction in whole or in part. Image shown is an artist rendering, dimensions shown are approximate and are subject to change. Square footage may vary based on elevation. Please consult your City Homes Sales Consultant. Blacklines revised August 31st, 2021.