

MARKHAM

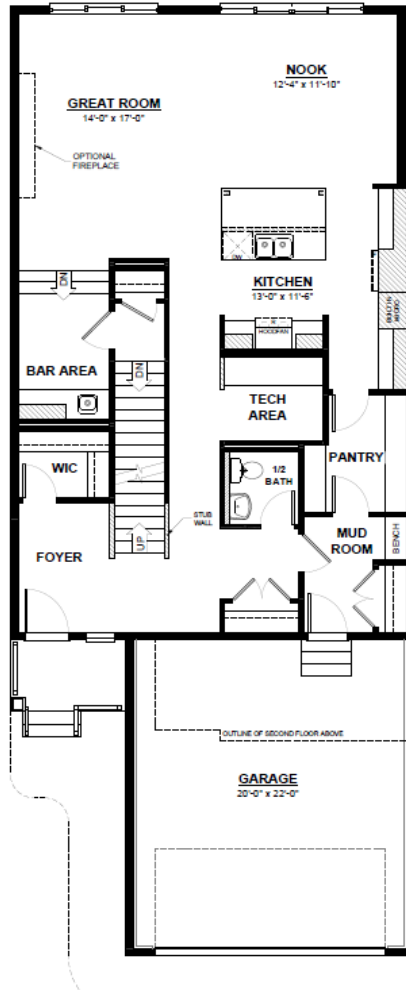
FRONT ATTACHED 28'
SINGLE FAMILY HOME

2,587 SQ FT
4 Bedroom
2.5 Bathrooms



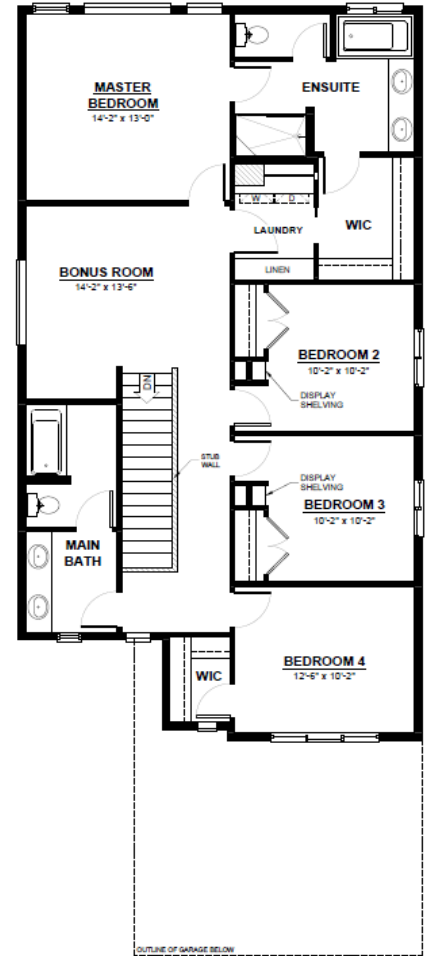
FEATURES

- 2 Storey
- 4 Bedrooms
- 2.5 Bathrooms
- 2nd Floor Laundry
- Bonus Room
- Mudroom
- Walk Through Pantry
- Main Floor Tech/ Office Area



MAIN FLOOR

1,232 SQ.FT
(9 FT. CEILINGS)



2ND FLOOR

1,355 SQ.FT
(8 FT. CEILINGS)



This plan is property of City Homes. All rights reserved, including the right of reproduction in whole or in part. Image shown is an artist rendering, dimensions shown are approximate and are subject to change. Square footage may vary based on elevation. Please consult your City Homes Sales Consultant. Blacklines revised August 18th, 2021.