

VICTORIA

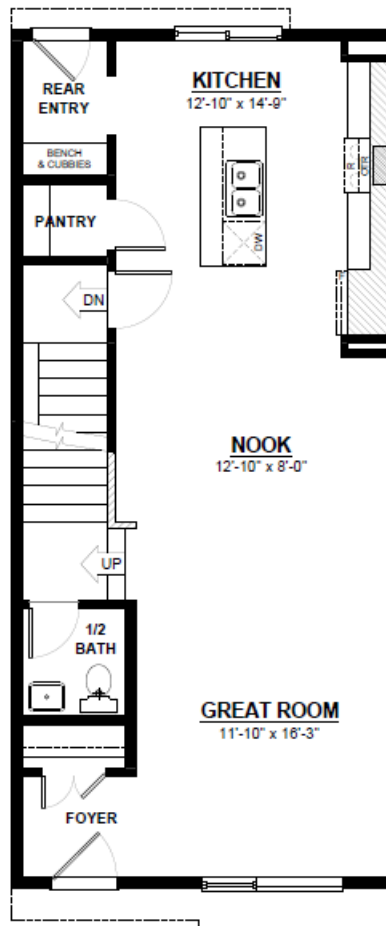
DETACHED GARAGE 18'
TOWNHOME

1,485 SQ FT
3 Bedroom
2.5 Bathrooms



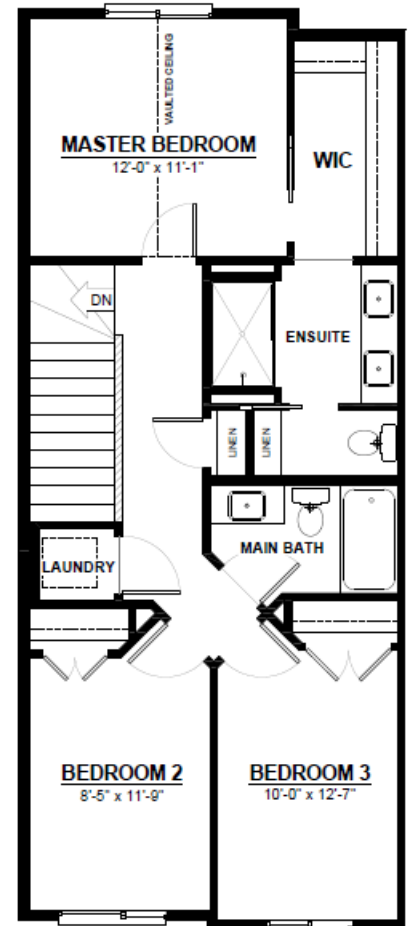
FEATURES

- 2 Storey
- 2nd Floor Laundry
- Quartz Countertops Throughout
- Open Concept Main Floor
- Mudroom with Built-in Bench/Cubbies
- Large Walk-in Pantry
- Vaulted Master Bedroom
- 4 Piece Master Ensuite
- Large Master Walk-in Closet
- No Condo Fees



MAIN FLOOR

720 SQ.FT
(9 FT. CEILINGS)



2ND FLOOR

765 SQ.FT
(8 FT. CEILINGS)

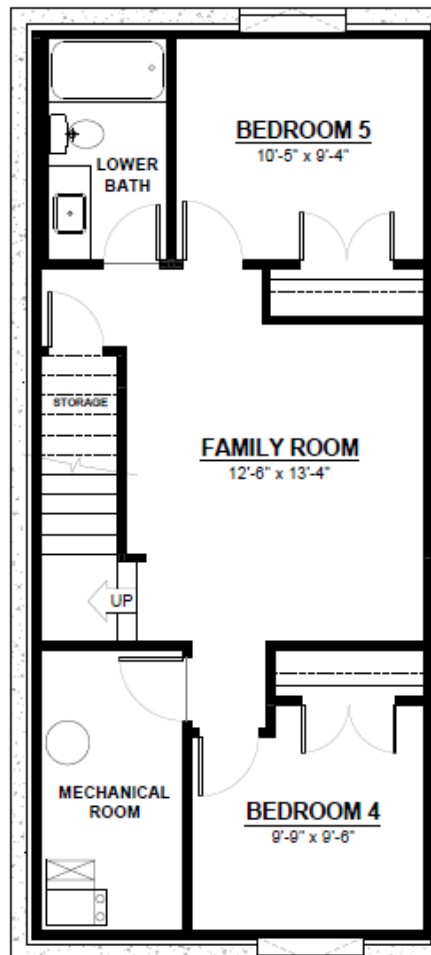


This plan is property of City Homes. All rights reserved, including the right of reproduction in whole or in part. Image shown is an artist rendering, dimensions shown are approximate and are subject to change. Square footage may vary based on elevation. Please consult your City Homes Sales Consultant. Blacklines revised August 31st, 2021.

VICTORIA

OPTIONAL BASEMENT

2 Additional Bedrooms
Large Living Space
Full Bathroom



BASEMENT

576 SQ.FT
(8 FT. FOUNDATION)



This plan is property of City Homes. All rights reserved, including the right of reproduction in whole or in part. Image shown is an artist rendering, dimensions shown are approximate and are subject to change. Square footage may vary based on elevation. Please consult your City Homes Sales Consultant. Blacklines revised August 31st, 2021.