

# VERNON

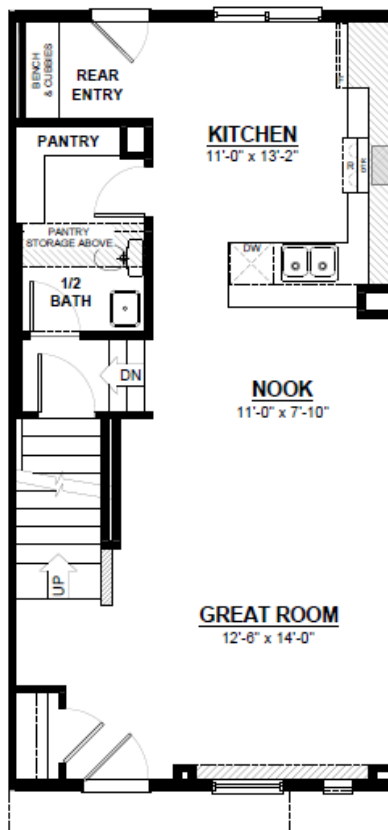
DETACHED GARAGE 18'  
TOWNHOME

1,322 SQ FT  
3 Bedroom  
2.5 Bathrooms



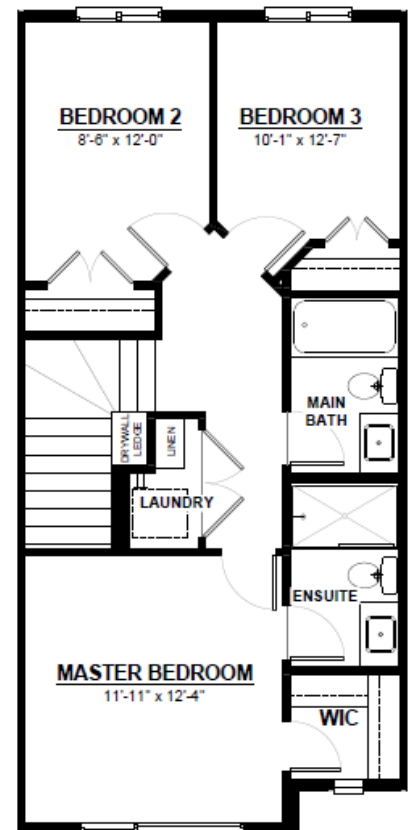
## FEATURES

- 3 Bedrooms
- 2.5 Bathrooms
- Large Walk-in Closet
- 2nd Floor Laundry
- Quartz Kitchen Countertops
- Large Walk-in Pantry
- Mudroom with Built-in Bench/Cubbies



### MAIN FLOOR

648 SQ.FT  
(9 FT. CEILINGS)



### 2ND FLOOR

674 SQ.FT  
(8 FT. CEILINGS)



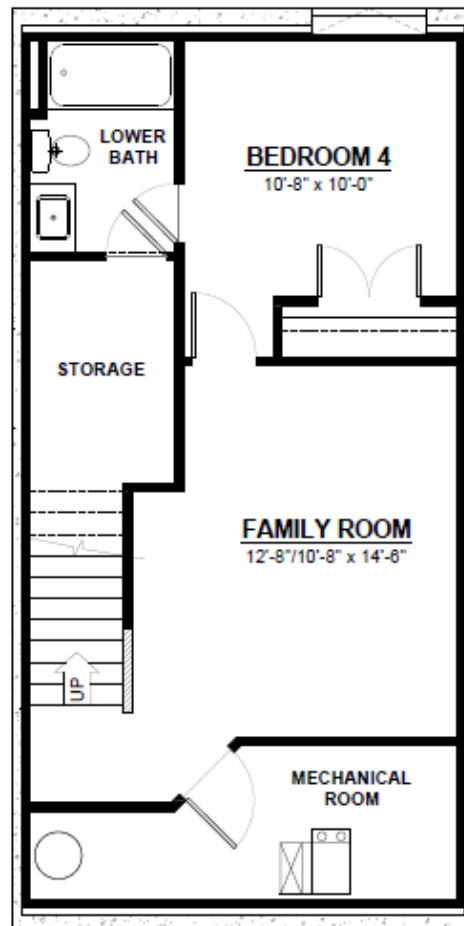
CITY HOMES

This plan is property of City Homes. All rights reserved, including the right of reproduction in whole or in part. Image shown is an artist rendering, dimensions shown are approximate and are subject to change. Square footage may vary based on elevation. Please consult your City Homes Sales Consultant. Blacklines revised August 31st, 2021.

# VERNON

## OPTIONAL BASEMENT

Additional Bedroom  
Large Living Area  
Full Bathroom



## BASEMENT

453 SQ.FT  
(8 FT. FOUNDATION)



This plan is property of City Homes. All rights reserved, including the right of reproduction in whole or in part. Image shown is an artist rendering, dimensions shown are approximate and are subject to change. Square footage may vary based on elevation. Please consult your City Homes Sales Consultant. Blacklines revised August 31st, 2021.