

# TOFINO MFH

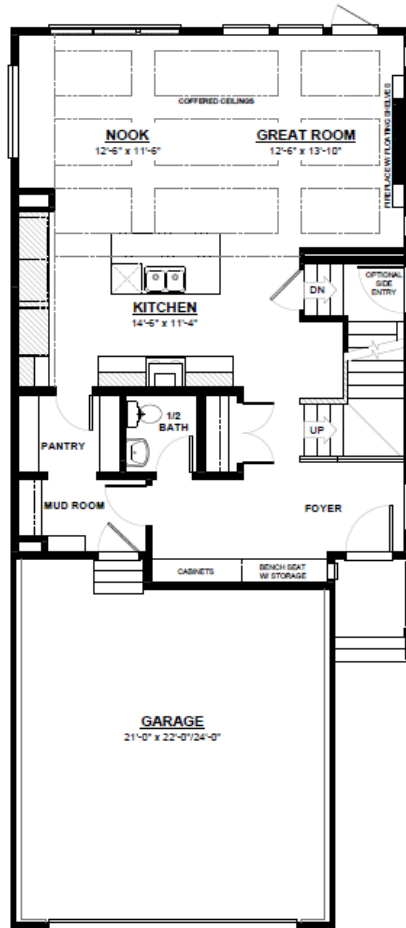
FRONT ATTACHED 26'  
SINGLE FAMILY HOME

2,164 SQ FT  
3 Bedroom  
2.5 Bathrooms



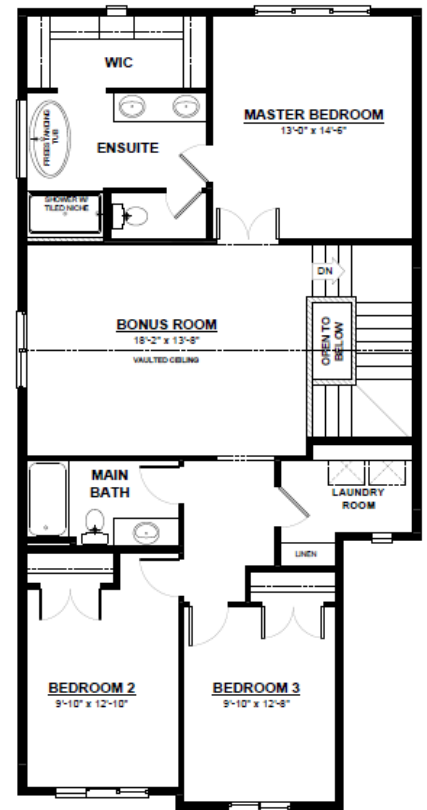
## FEATURES

- 2 Storey
- 2nd Floor Laundry
- Quartz Countertops Throughout
- Large Walk-Through Pantry & Mudroom
- Cabinets & Bench Seat Located at the Front Entry
- Massive Chefs Kitchen with Built in Oven & Microwave
- Main Floor Coffered Ceilings
- 2nd Floor Bonus Room with Vaulted Ceilings
- Open to Below Staircase
- Oversized Master Bedroom
- 5 Piece Ensuite with Walk-in Closet



### MAIN FLOOR

922 SQ.FT  
(9 FT. CEILINGS)



### 2ND FLOOR

1,242 SQ.FT  
(8 FT. CEILINGS)



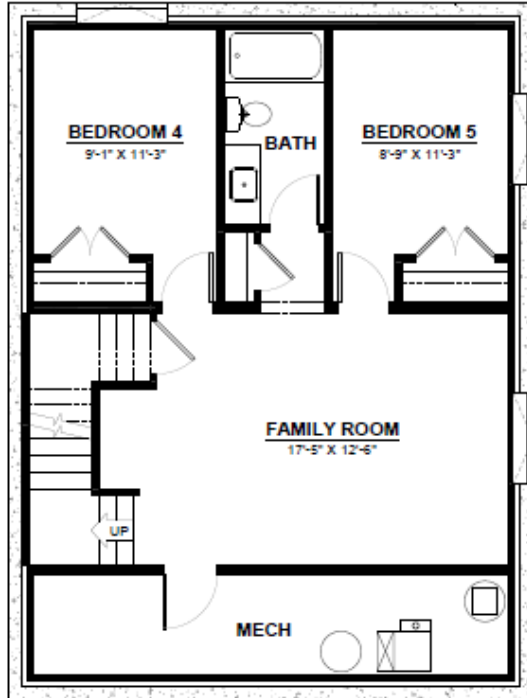
CITY HOMES

This plan is property of City Homes. All rights reserved, including the right of reproduction in whole or in part. Image shown is an artist rendering, dimensions shown are approximate and are subject to change. Square footage may vary based on elevation. Please consult your City Homes Sales Consultant. Blacklines revised August 9th, 2021.

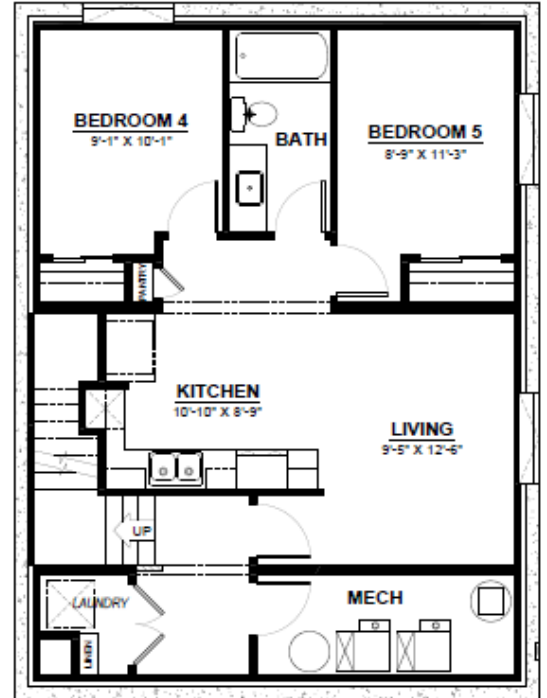
# TOFINO MFH

## OPTIONAL BASEMENT

- 2 Additional Bedrooms
- Large Living Space
- Full Bathroom



**OPTIONAL BASEMENT**  
682 SQ.FT  
(8 FT. FOUNDATION)



**OPTIONAL BASEMENT SUITE**  
745 SQ.FT  
(9 FT. FOUNDATION)  
(NON ZLL ONLY)



This plan is property of City Homes. All rights reserved, including the right of reproduction in whole or in part. Image shown is an artist rendering, dimensions shown are approximate and are subject to change. Square footage may vary based on elevation. Please consult your City Homes Sales Consultant. Blacklines revised August 9th, 2021.