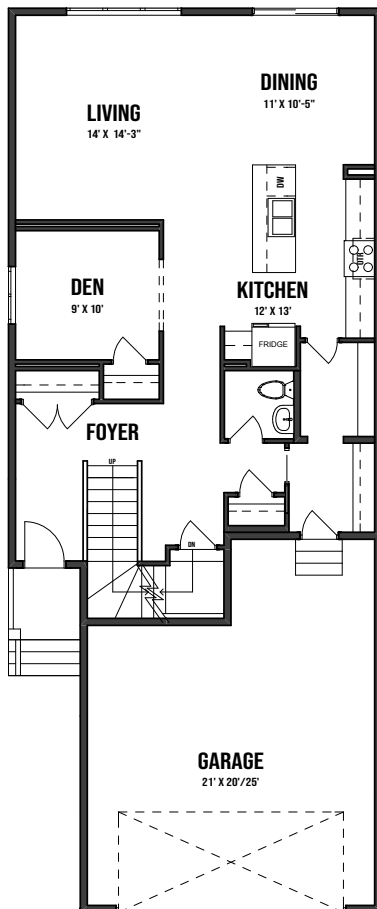


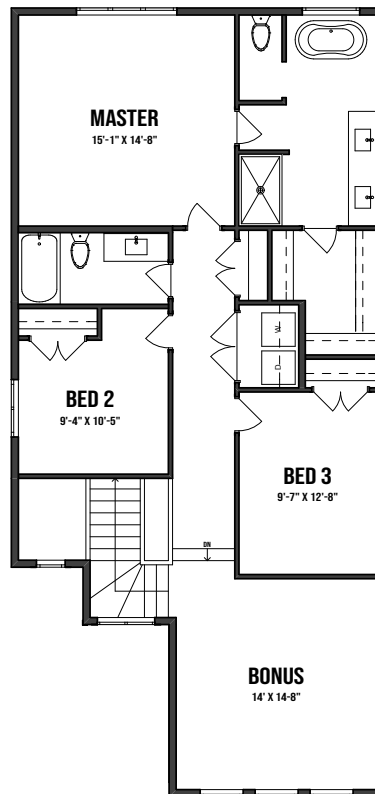
THE BLAIRMORE

2 STOREY • 2,277sq.ft.



MAIN FLOOR

1,035sq.ft.
(9 FT. CEILINGS)

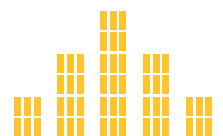


2ND FLOOR

1,242sq.ft.
(8 FT. CEILINGS)

FEATURES

- 3 bedrooms
- 2 ½ bathrooms
- 5 piece ensuite
- Second floor laundry
- Master walk-in closet



CITY HOMES
MASTER BUILDER

This plan is property of City Homes. All rights reserved, including the right of reproduction in whole or in part.
Dimensions shown are approximate and are subject to change. Please consult your City Homes Sales Consultant.
Revised August 28, 2020