

BLAIRMORE P

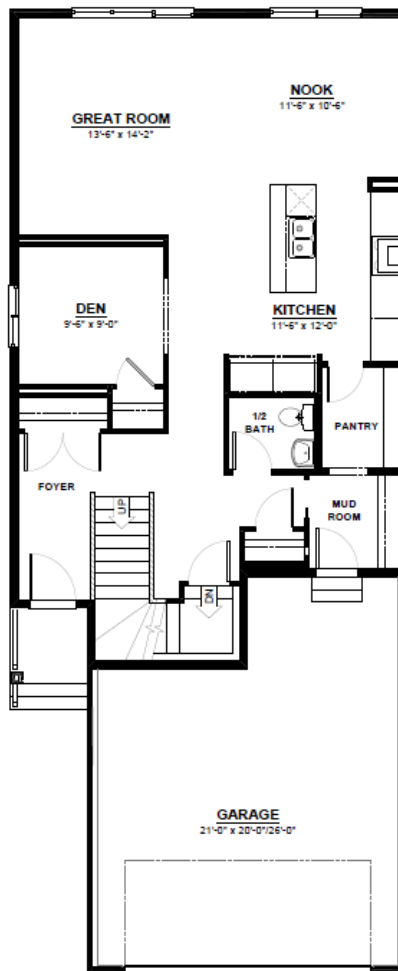
FRONT ATTACHED 26'
SINGLE FAMILY HOME

2,280 SQ FT
3 Bedroom
2.5 Bathrooms



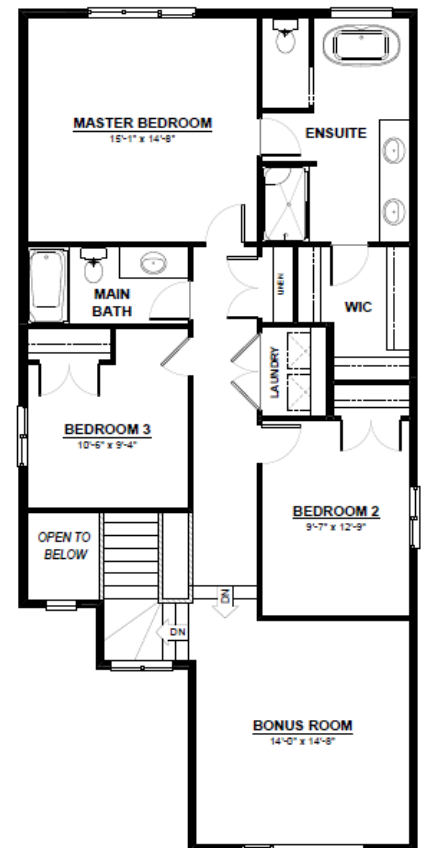
FEATURES

- 2 Storey
- 2nd Floor Laundry
- Quartz Countertops Throughout
- Large Walk-Through Pantry
- Main Floor Den
- Massive Chefs Kitchen with Built in Oven & Microwave
- 2nd Floor Bonus Room
- Open to Below Staircase
- Oversized Master Bedroom
- 5 Piece Ensuite with Walk-in Closet



MAIN FLOOR

1,037 SQ.FT
(9 FT. CEILINGS)



2ND FLOOR

1,243 SQ.FT
(8 FT. CEILINGS)



This plan is property of City Homes. All rights reserved, including the right of reproduction in whole or in part. Image shown is an artist rendering, dimensions shown are approximate and are subject to change. Square footage may vary based on elevation. Please consult your City Homes Sales Consultant. Blacklines revised August 31st, 2021.