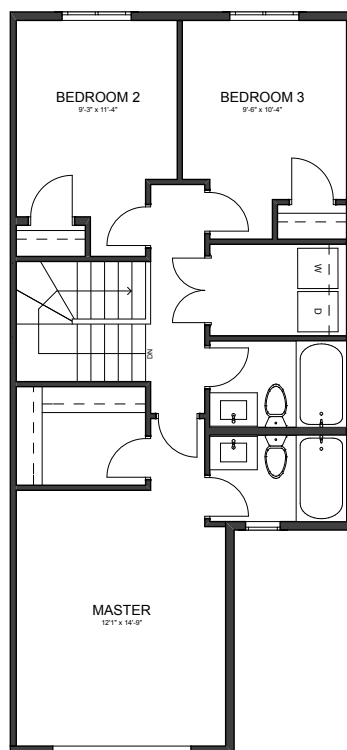
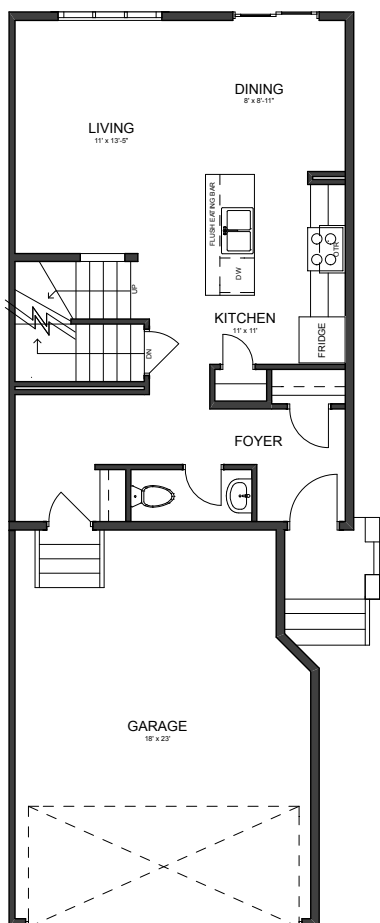


THE WEXFORD

2 STOREY • 1,363sq.ft.



FEATURES

- 3 bedrooms
- 2 ½ bathrooms
- 2nd floor laundry
- Master walk-in closet



MAIN FLOOR

596sq.ft.
(9 FT. CEILINGS)



2ND FLOOR

767sq.ft.
(8 FT. CEILINGS)

This plan is property of City Homes. All rights reserved, including the right of reproduction in whole or in part.
Dimensions shown are approximate and are subject to change. Please consult your City Homes Sales Consultant.
◆ Journeyman Certificate Homes ◆ Revised January 9, 2020


CITY HOMES
MASTER BUILDER