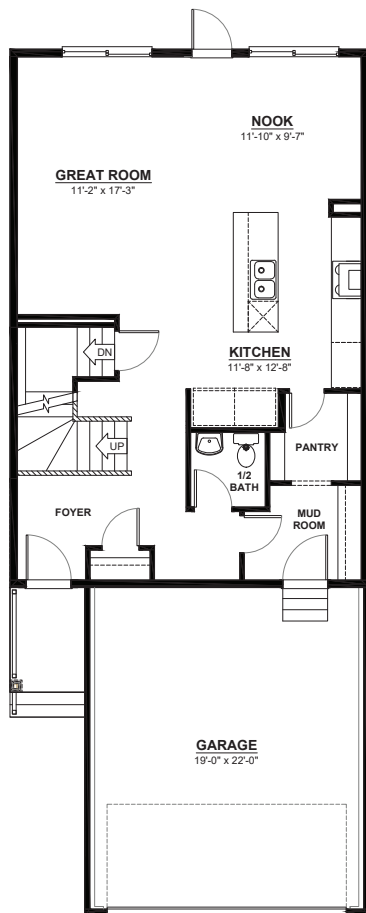


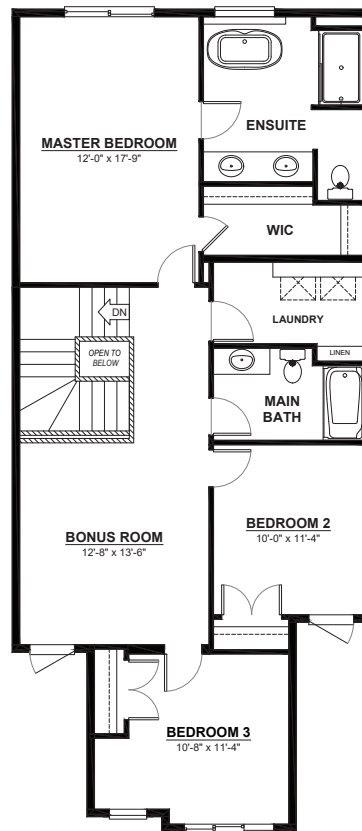
THE ABBOTSFORD

2 STOREY • 2,049sq.ft.



MAIN FLOOR

864sq.ft.
(9 FT. CEILINGS)

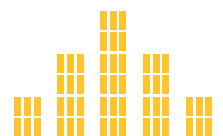


2ND FLOOR

1,185sq.ft.
(8 FT. CEILINGS)

FEATURES

- 3 bedrooms
- 2 1/2 bathrooms
- 5 piece ensuite
- 2nd floor laundry
- Master walk-in closet
- 2nd floor flex room



CITY HOMES
MASTER BUILDER

This plan is the property of City Homes. All rights reserved, including the right of reproduction in whole or in part. Image shown is an artist rendering, dimensions shown are approximate and are subject to change. Square footage may vary based on elevation. Please consult your City Homes Sales Consultant. Blacklines revised December 11, 2020.