

ABBOTSFORD P

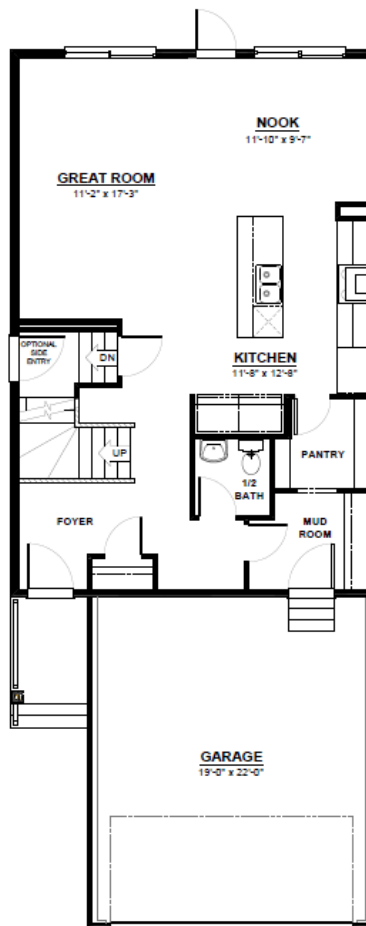
FRONT ATTACHED 24'
SINGLE FAMILY HOME

2,049 SQ FT
3 Bedroom
2.5 Bathrooms



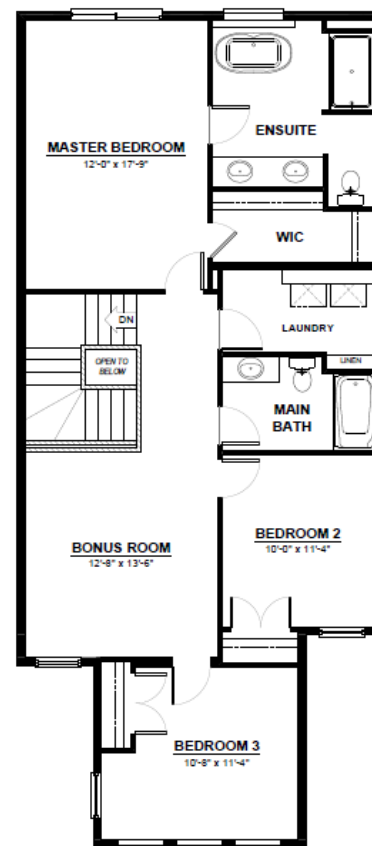
FEATURES

- 2 Storey
- 2nd Floor Laundry
- Quartz Countertops Throughout
- Large Walk-Through Pantry & Mudroom
- Massive Chefs Kitchen with Built in Oven & Microwave
- 2nd Floor Bonus Room
- Open to Below Staircase
- Oversized Master Bedroom
- Large Master Walk-in Closet
- 5 Piece Ensuite



MAIN FLOOR

864 SQ.FT
(9 FT. CEILINGS)



2ND FLOOR

1,185 SQ.FT
(8 FT. CEILINGS)

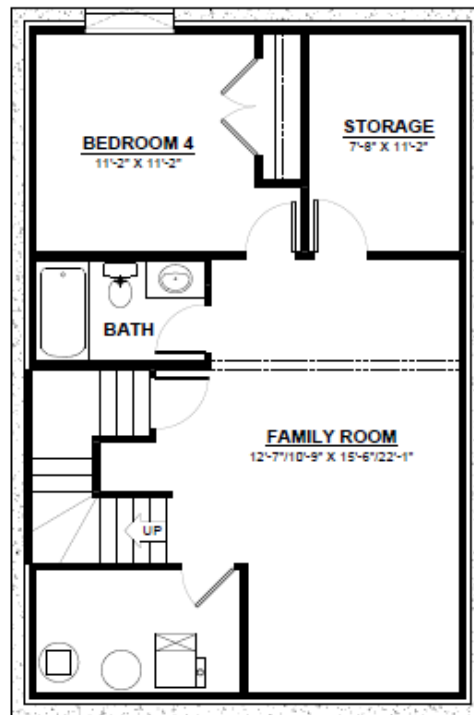


This plan is property of City Homes. All rights reserved, including the right of reproduction in whole or in part. Image shown is an artist rendering, dimensions shown are approximate and are subject to change. Square footage may vary based on elevation. Please consult your City Homes Sales Consultant. Blacklines revised August 31st, 2021.

ABBOTSFORD P

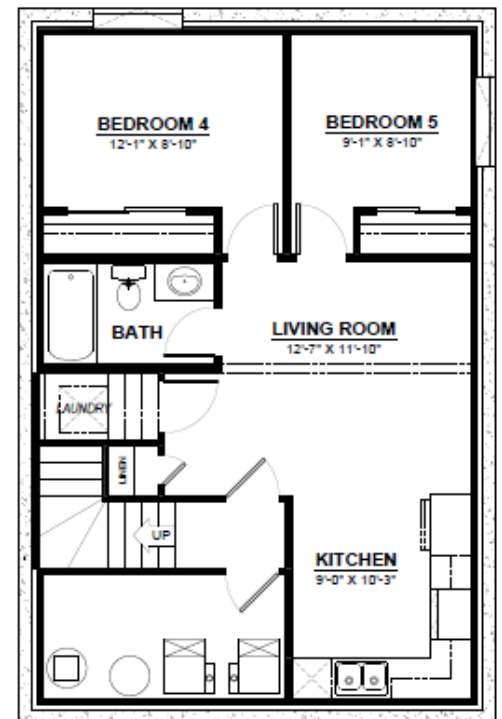
OPTIONAL BASEMENT

- 2 Additional Bedrooms
- Large Living Space
- Full Bathroom



BASEMENT

615 SQ.FT
(8 FT. FOUNDATION)



BASEMENT SUITE

699 SQ.FT
(9 FT. FOUNDATION)
(NON ZLL ONLY)



This plan is property of City Homes. All rights reserved, including the right of reproduction in whole or in part. Image shown is an artist rendering, dimensions shown are approximate and are subject to change. Square footage may vary based on elevation. Please consult your City Homes Sales Consultant. Blacklines revised August 31st, 2021.