

# ABBOTSFORD P

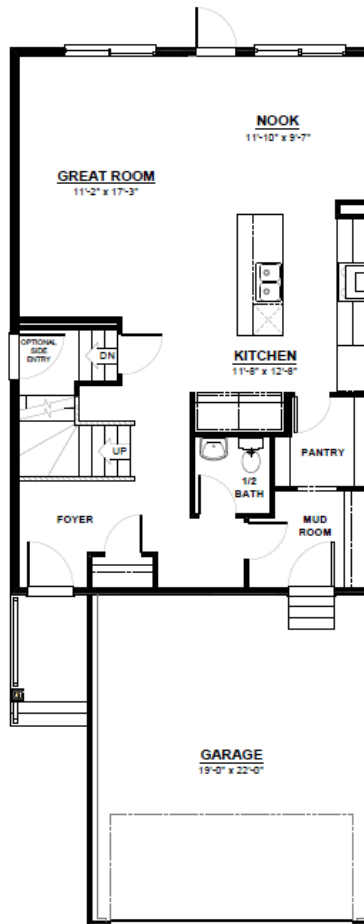
FRONT ATTACHED 24'  
SINGLE FAMILY HOME

2,049 SQ FT  
3 Bedroom  
2.5 Bathrooms



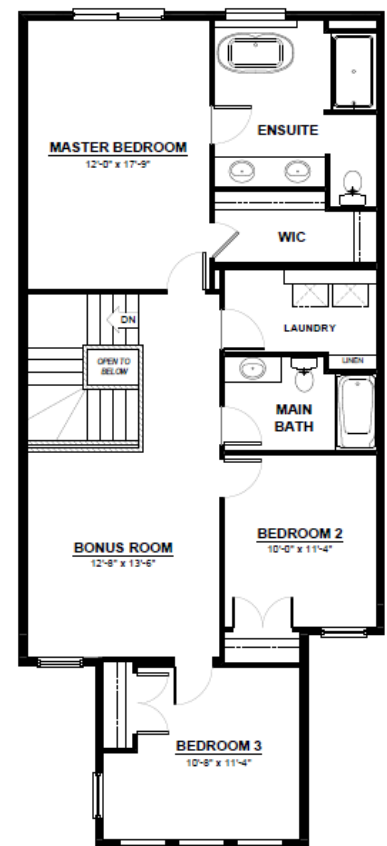
## FEATURES

2 Storey  
3 Bedrooms  
2.5 Bathrooms  
5 Piece Ensuite  
2nd Floor Laundry  
Master Walk-In Closet  
2nd Floor Flex Room



### MAIN FLOOR

864 SQ.FT  
(9 FT. CEILINGS)



### 2ND FLOOR

1,185 SQ.FT  
(8 FT. CEILINGS)

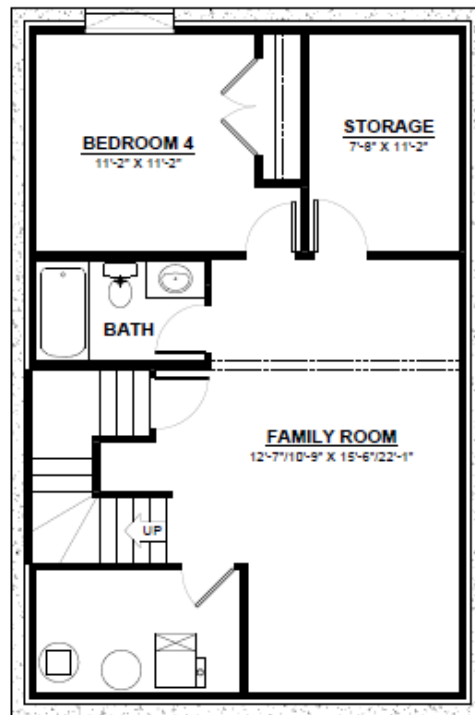


This plan is property of City Homes. All rights reserved, including the right of reproduction in whole or in part. Image shown is an artist rendering, dimensions shown are approximate and are subject to change. Square footage may vary based on elevation. Please consult your City Homes Sales Consultant. Blacklines revised August 31st, 2021.

# ABBOTSFORD P

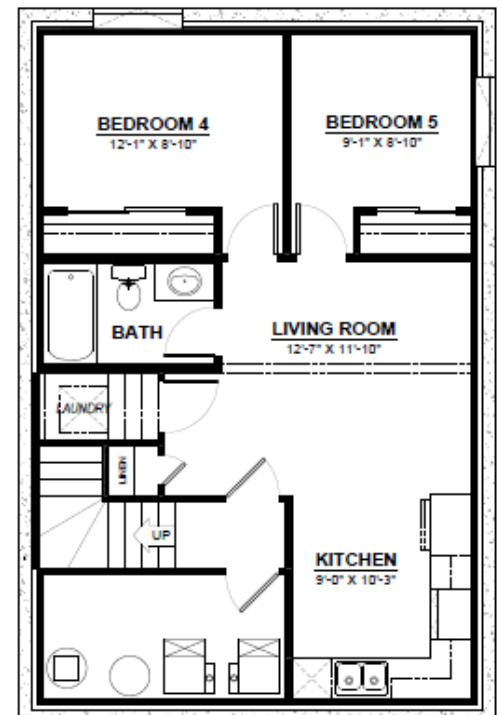
## OPTIONAL BASEMENT

2 Additional Bedrooms  
Large Living Space  
Full Bathroom



### BASEMENT

615 SQ.FT  
(8 FT. FOUNDATION)



### BASEMENT SUITE

699 SQ.FT  
(9 FT. FOUNDATION)  
(NON ZLL ONLY)



This plan is property of City Homes. All rights reserved, including the right of reproduction in whole or in part. Image shown is an artist rendering, dimensions shown are approximate and are subject to change. Square footage may vary based on elevation. Please consult your City Homes Sales Consultant. Blacklines revised August 31st, 2021.