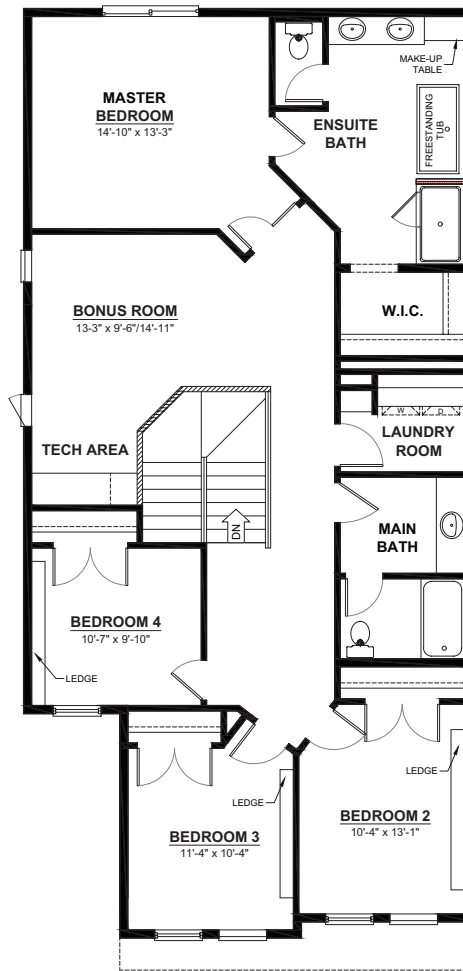
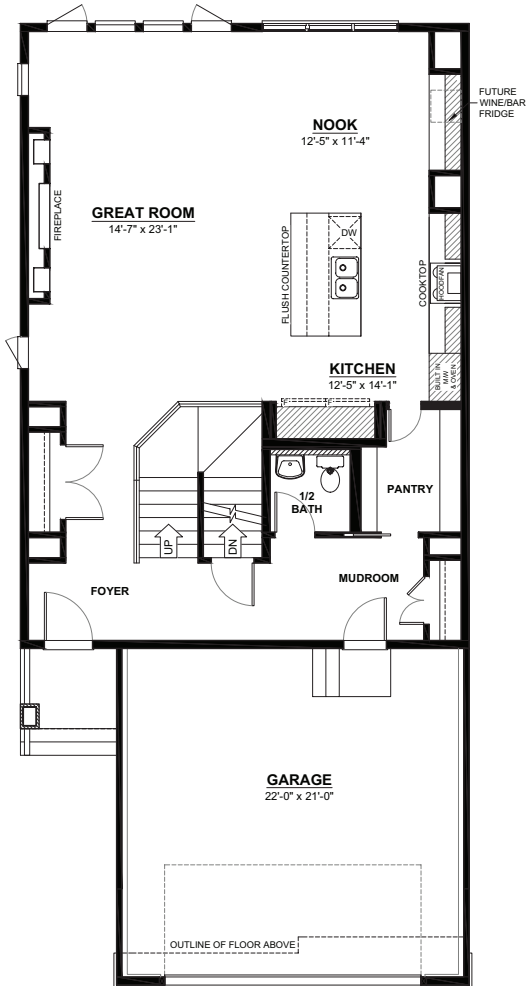


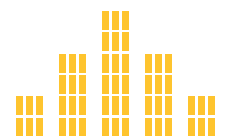
THE MILAN P

2 STOREY · 2,621sq.ft.



FEATURES

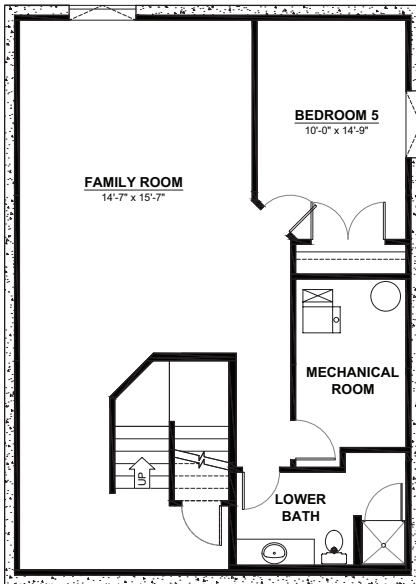
- 4 bedrooms
- 2½ bathrooms
- 5 piece ensuite
- 2nd floor laundry
- Master walk-in closet
- Walk through pantry



CITY HOMES
MASTER BUILDER

This plan is the property of City Homes. All rights reserved, including the right of reproduction in whole or in part. Dimensions shown are approximate and are subject to change. Please consult your City Homes Sales Consultant.
◆ Journeyman Certificate Homes ◆ Revised February 11, 2020

THE MILAN P OPTIONAL BASEMENT LAYOUTS



OPTIONAL BASEMENT DEVELOPMENT

912sq.ft.
(8FT. CEILINGS)