

# MILAN P

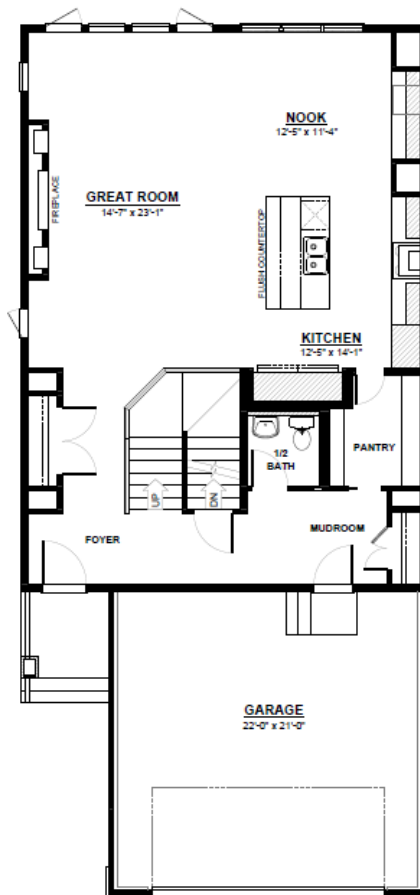
FRONT ATTACHED 28'  
SINGLE FAMILY HOME

2,610 SQ FT  
4 Bedroom  
2.5 Bathrooms



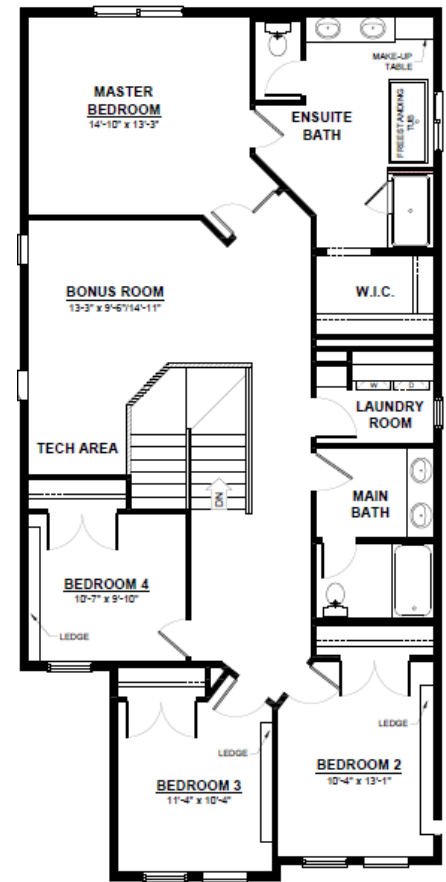
## FEATURES

- 2 Storey
- 2nd Floor Laundry
- Quartz Countertops Throughout
- Large Walk-Through Pantry & Mudroom
- Massive Chefs Kitchen with Built in Oven & Microwave
- Extended Cabinetry into Nook
- Electric Fireplace with Build out in Great Room
- Centralized Staircase
- 2nd Floor Bonus Room with Optional Tech Desk Area
- Dual Sinks in Main Bathroom
- Oversized Master Bedroom
- 5 Piece Ensuite with Walk-in Closet



## MAIN FLOOR

1,092 SQ.FT  
(9 FT. CEILINGS)



## 2ND FLOOR

1,518 SQ.FT  
(8 FT. CEILINGS)

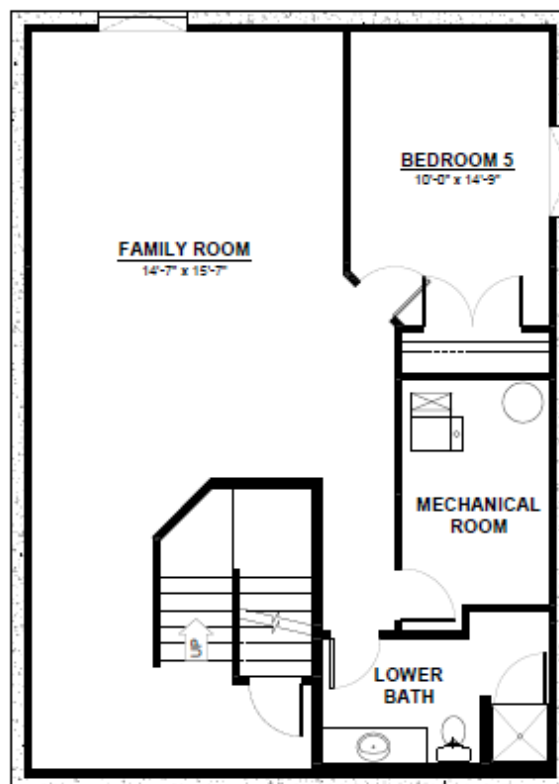


This plan is property of City Homes. All rights reserved, including the right of reproduction in whole or in part. Image shown is an artist rendering, dimensions shown are approximate and are subject to change. Square footage may vary based on elevation. Please consult your City Homes Sales Consultant. Blacklines revised August 31st, 2021.

# MILAN P

## OPTIONAL BASEMENT

Additional Bedroom  
Large Living Space  
Full Bathroom



## BASEMENT

912 SQ.FT  
(8 FT. FOUNDATION)



This plan is property of City Homes. All rights reserved, including the right of reproduction in whole or in part. Image shown is an artist rendering, dimensions shown are approximate and are subject to change. Square footage may vary based on elevation. Please consult your City Homes Sales Consultant. Blacklines revised August 31st, 2021.