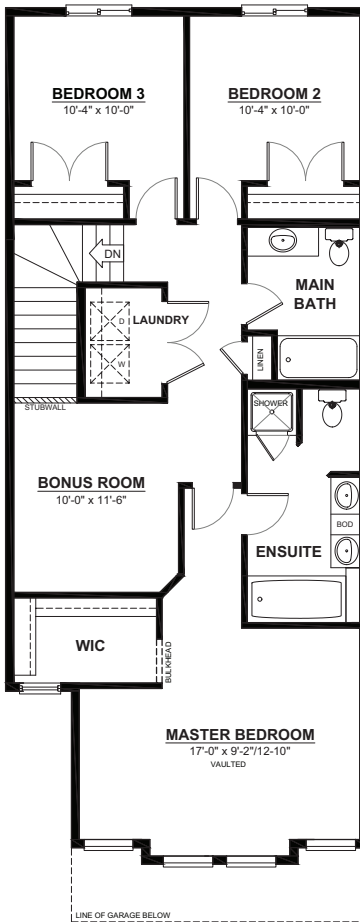
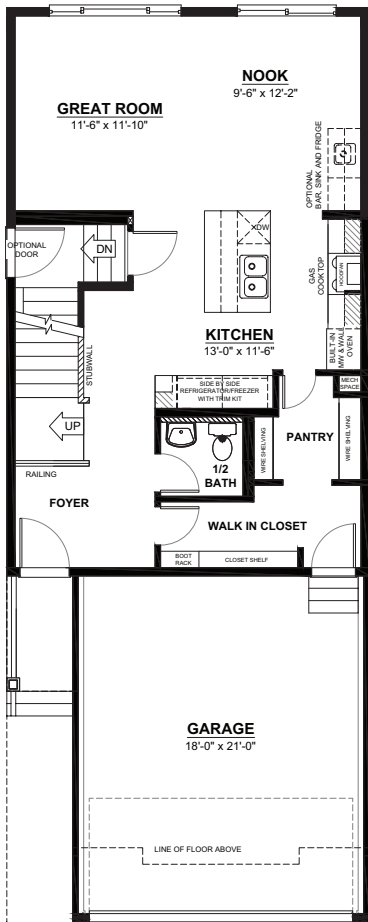


THE CASTOR P

2 STOREY · 1,853sq.ft.



MAIN FLOOR
759sq.ft.
(9FT. CEILINGS)

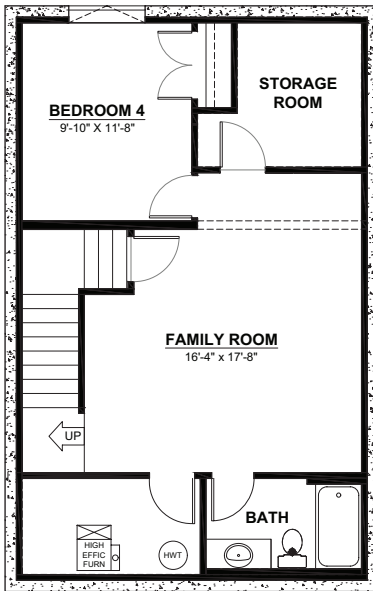


2ND FLOOR
1,094sq.ft.
(8FT. CEILINGS)

FEATURES

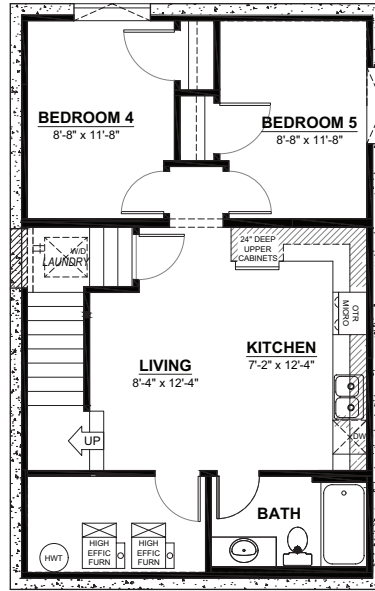
- 3 bedrooms
- 2½ bathrooms
- 5 piece ensuite
- 2nd floor laundry
- Master walk-in closet
- Walk through pantry

THE CASTOR P OPTIONAL BASEMENT LAYOUTS



OPTIONAL BASEMENT DEVELOPMENT

541sq.ft.
(8FT. CEILINGS)



OPTIONAL BASEMENT SUITE

617sq.ft.
(9FT. CEILINGS)