

THE CASTOR M

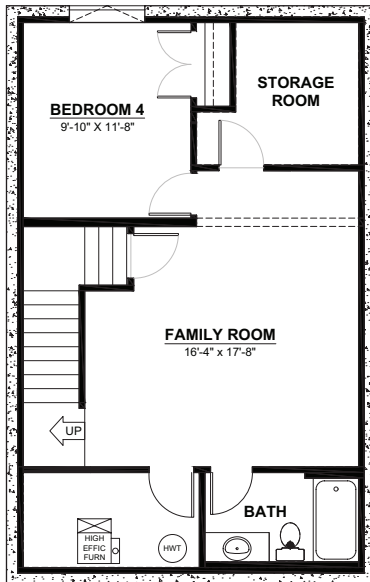
2 STOREY · 1,802sq.ft.



FEATURES

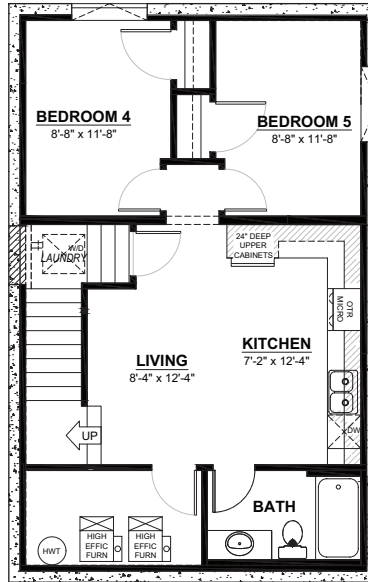
- 3 bedrooms
- 2½ bathrooms
- 5 piece ensuite
- 2nd floor laundry
- Master walk-in closet
- Walk through pantry

THE CASTOR OPTIONAL BASEMENT LAYOUTS



OPTIONAL BASEMENT DEVELOPMENT

541sq.ft.
(8FT. CEILINGS)



OPTIONAL BASEMENT SUITE

617sq.ft.
(9FT. CEILINGS)