

# CASTOR M

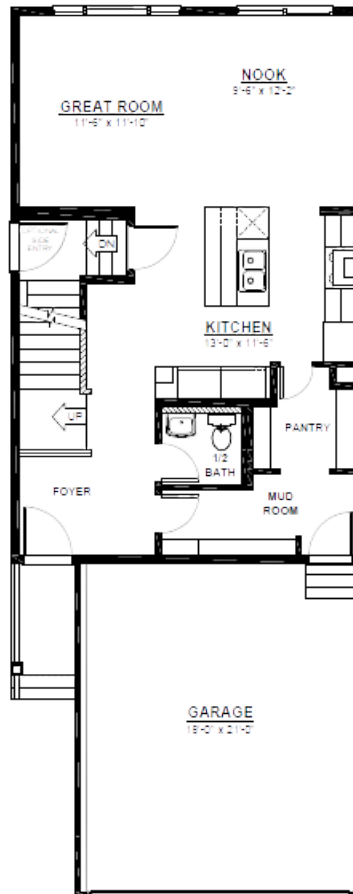
FRONT ATTACHED 22'  
SINGLE FAMILY HOME

1,854 SQ FT  
3 Bedroom  
2.5 Bathrooms



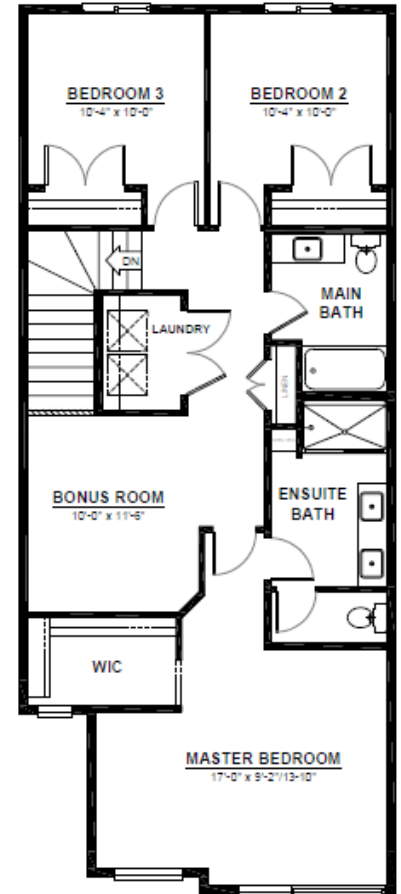
## FEATURES

- 2 Storey
- 2nd Floor Laundry
- Quartz Countertops Throughout
- Walk Through pantry & Mudroom i
- Massive Chefs Kitchen with Built in Oven & Microwave
- Second Floor Bonus Room
- Oversized Master Bedroom with Vaulted Ceilings
- 5 Piece Ensuite
- Large Master Walk-in Closet



### MAIN FLOOR

759 SQ.FT  
(9 FT. CEILINGS)



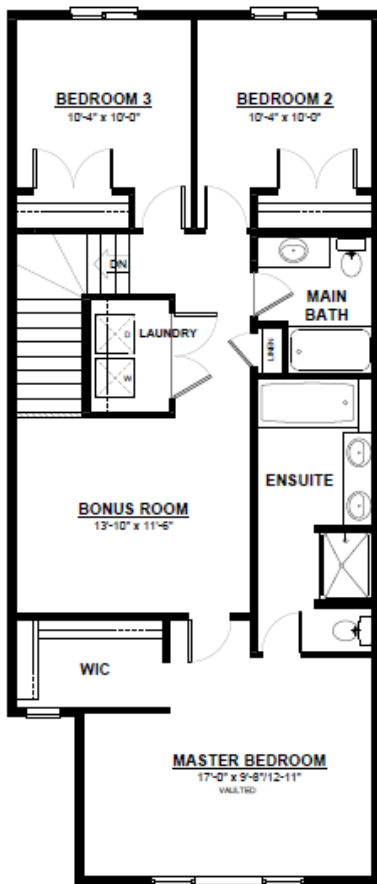
### 2ND FLOOR

1,095 SQ.FT  
(8 FT. CEILINGS)



This plan is property of City Homes. All rights reserved, including the right of reproduction in whole or in part. Image shown is an artist rendering, dimensions shown are approximate and are subject to change. Square footage may vary based on elevation. Please consult your City Homes Sales Consultant. Blacklines revised August 31st, 2021.

# CASTOR M

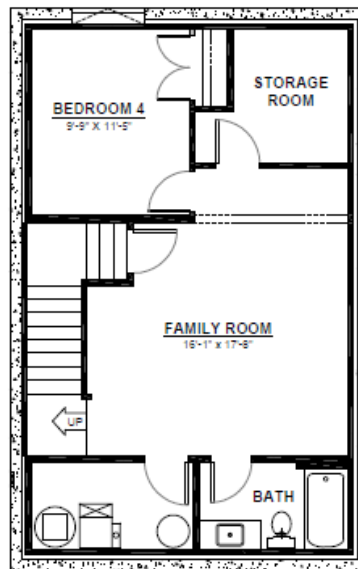


## OPTIONAL 2ND FLOOR

1,093 SQ.FT  
(8 FT. CEILINGS)

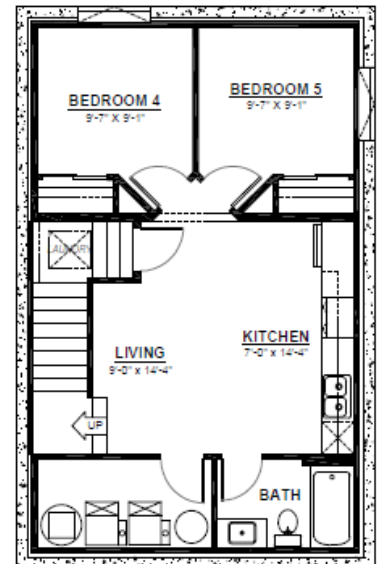
## OPTIONAL BASEMENT

Additional Bedroom/s  
Large Living Space  
Full Bathroom



## BASEMENT

547 SQ.FT  
(8 FT. FOUNDATION)



## BASEMENT SUITE

618 SQ.FT  
(9 FT. FOUNDATION)  
(NON ZLL ONLY)



This plan is property of City Homes. All rights reserved, including the right of reproduction in whole or in part. Image shown is an artist rendering, dimensions shown are approximate and are subject to change. Square footage may vary based on elevation. Please consult your City Homes Sales Consultant. Blacklines revised August 31st, 2021.