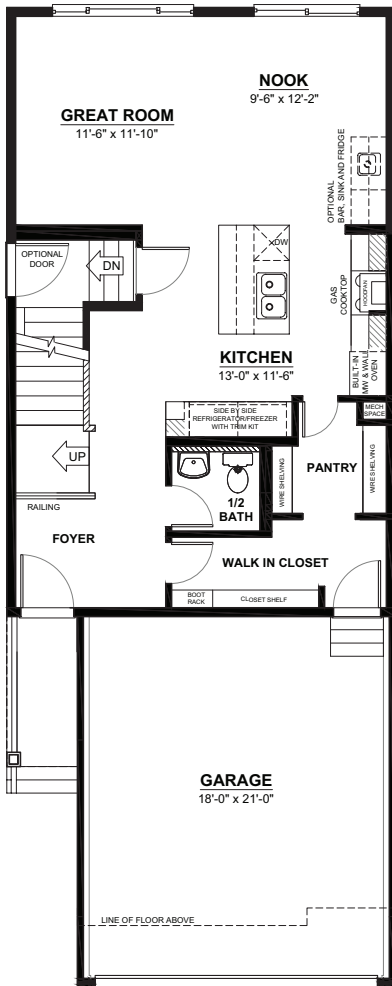
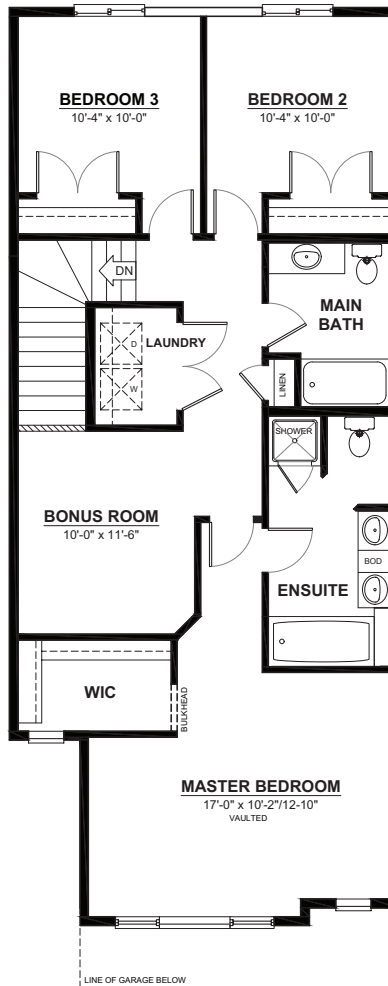


# THE CASTOR FH

2 STOREY · 1,856sq.ft.



**MAIN FLOOR**  
759sq.ft.  
(9FT. CEILINGS)

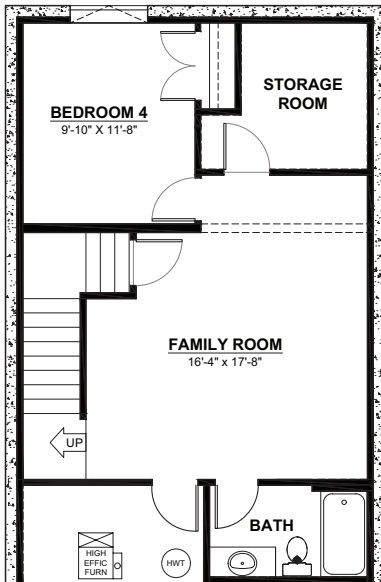


**2ND FLOOR**  
1,097sq.ft.  
(8FT. CEILINGS)

## FEATURES

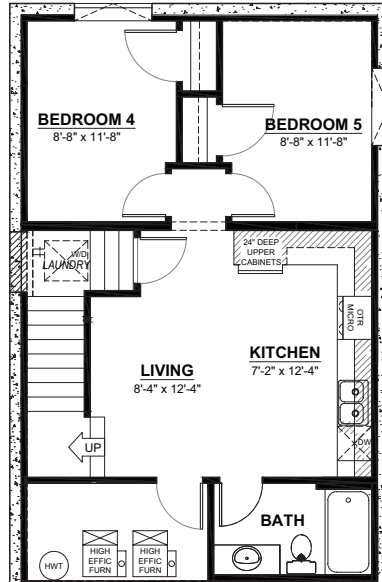
- 3 bedrooms
- 2½ bathrooms
- 5 piece ensuite
- 2<sup>nd</sup> floor laundry
- Master walk-in closet
- Walk through pantry

# THE CASTOR FH OPTIONAL BASEMENT LAYOUTS



## OPTIONAL BASEMENT DEVELOPMENT

541sq.ft.  
(8FT. CEILINGS)



## OPTIONAL BASEMENT SUITE

617sq.ft.  
(9FT. CEILINGS)