

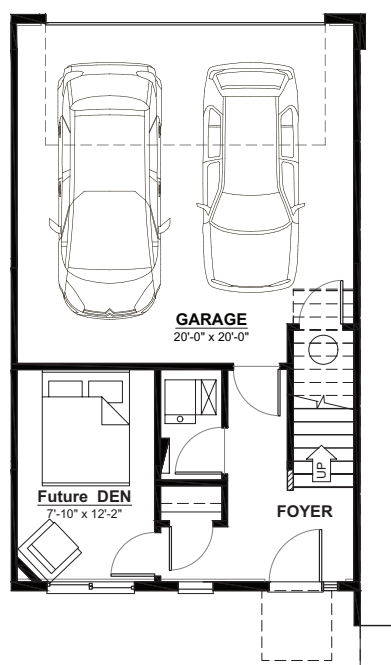


CASPIA

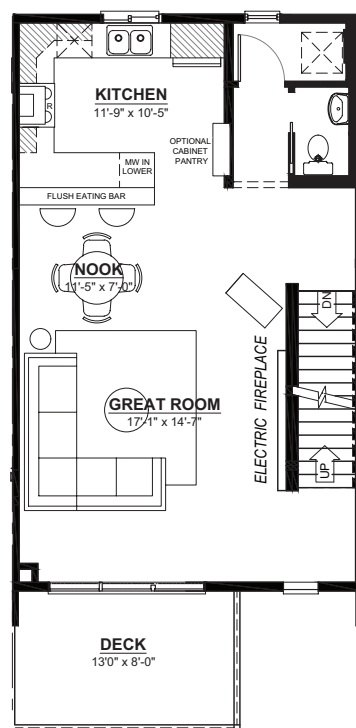
IN THE COLLECTIONS
AT CREEKWOOD

FURANO · UNIT B

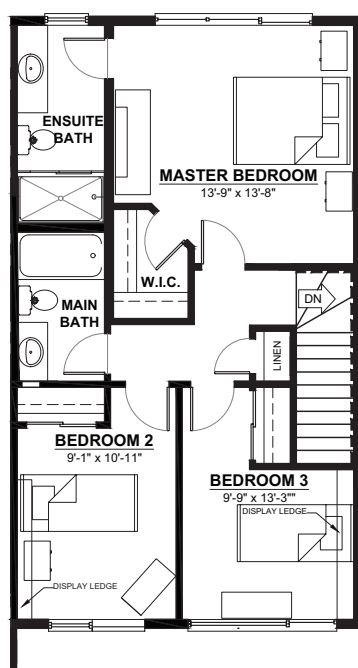
3 STOREY · 1,452sq.ft.



GROUND FLOOR
92sq.ft.
Opt. Den +108sq.ft.



MAIN FLOOR
660sq.ft.
(9FT. CEILINGS)



2ND FLOOR
700sq.ft.
(8FT. CEILINGS)

FEATURES

- Expansive main floor balcony overlooking large fully landscaped front yard
- Contemporary exterior featuring stone, longboard and glass railing
- Attached double car garage
- Open concept main floor
- Spacious great room opening onto the large deck with glass railing
- Stainless steel package including chimney style hood fan, gas range, fridge with external water and ice, dishwasher, built-in microwave, front load white washer and dryer
- 3 bedrooms
- 2½ bathrooms
- Optional future den or 4th bedroom
- Master suite features walk-in closet and 3-piece ensuite with 5' shower.
- Main floor laundry
- Remote controlled electric fireplace with modern mantel in the great
- NO CONDO FEES!

This plan is the property of City Homes. All rights reserved, including the right of reproduction in whole or in part. Dimensions shown are approximate and are subject to change.

Please consult your City Homes Sales Consultant. Journeyman Certificate Homes Revised September 22, 2018

