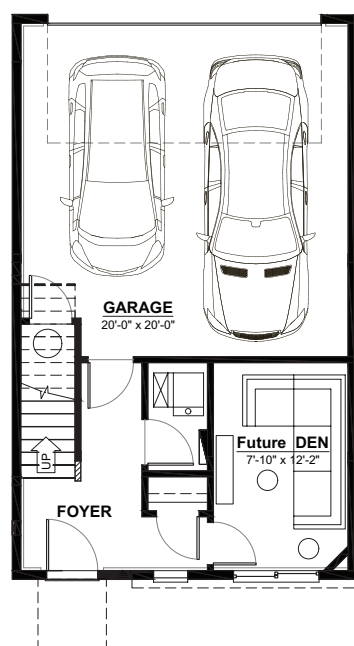


CASPIA

IN THE COLLECTIONS
AT CREEKWOOD

BRISTOL · UNIT A

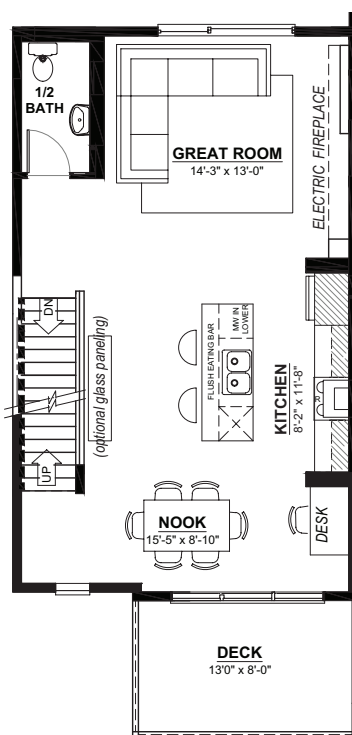
3 STOREY · 1,465sq.ft.



GROUND FLOOR

92sq.ft.

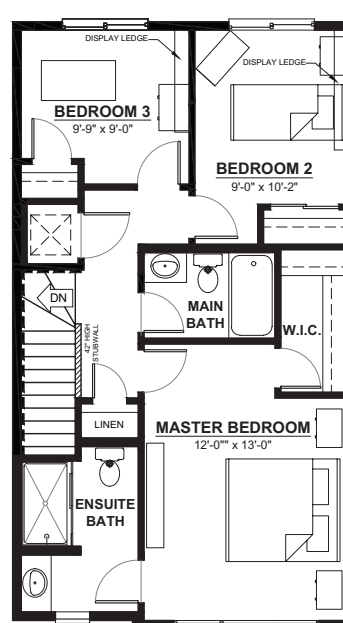
Opt. Den +108sq.ft.



MAIN FLOOR

667sq.ft.

(9FT. CEILINGS)



2ND FLOOR

706sq.ft.

(8FT. CEILINGS)

FEATURES

- Spacious main floor balcony overlooking large, fully landscaped, front yard
- Contemporary exterior featuring Stonewood paneling, glass railing, and black clad triple pane windows
- Attached double car garage
- Open concept main floor
- Central kitchen separating the great room and nook
- Stainless steel package including chimney style hood fan, gas range, fridge with external water and ice, dishwasher, built-in microwave, front load white washer and dryer
- 3 bedrooms
- 2½ bathrooms
- Optional future den or 4th bedroom
- Master suite features walk-in closet and 3-piece ensuite with 5' shower
- Convenient second floor laundry
- Remote controlled electric fireplace with modern mantel in the great room
- NO CONDO FEES!

This plan is the property of City Homes. All rights reserved, including the right of reproduction in whole or in part. Dimensions shown are approximate and are subject to change.

Please consult your City Homes Sales Consultant. Journeyman Certificate Homes Revised September 22, 2018



