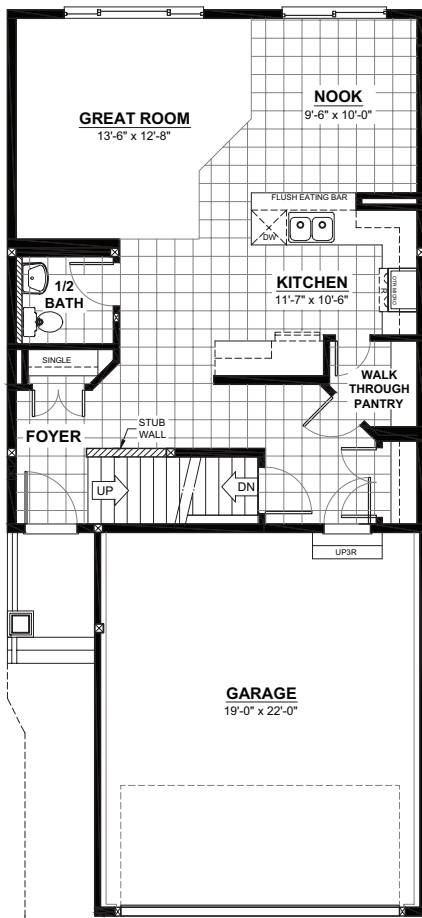
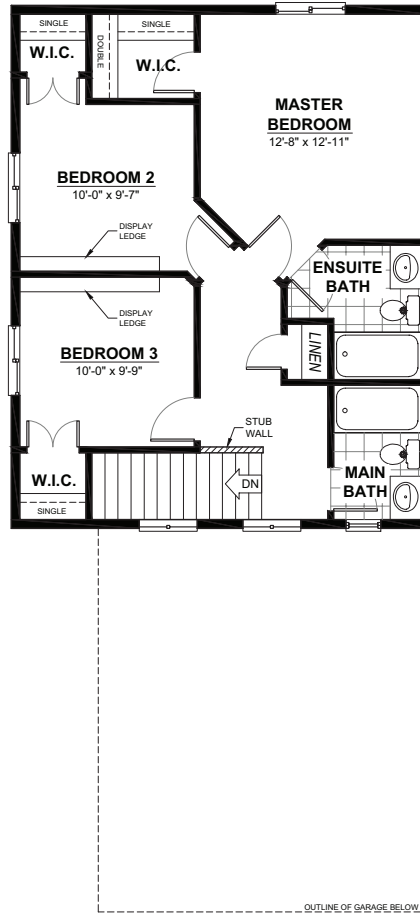


THE BELFORD A

2 STOREY · 1,403sq.ft.



MAIN FLOOR
720sq.ft.
(8FT. CEILINGS)



2ND FLOOR
683sq.ft.
(8FT. CEILINGS)

FEATURES

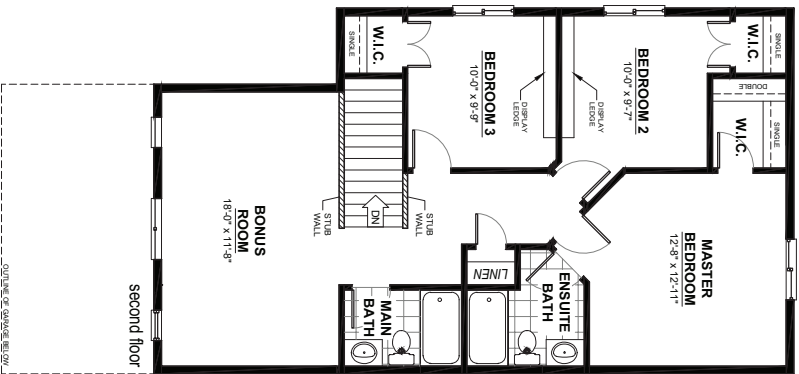
- 3 bedrooms
- 2½ bathrooms
- Large walk-in closet
- Walkthrough pantry
- Large great room

THE BELFORD A OPTIONAL LAYOUTS



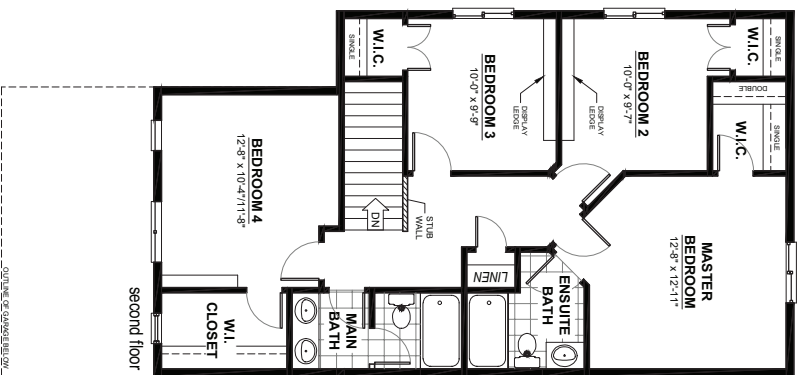
BONUS ROOM • 1,631sq.ft.*

- Large bonus room
- Stubby wall opening



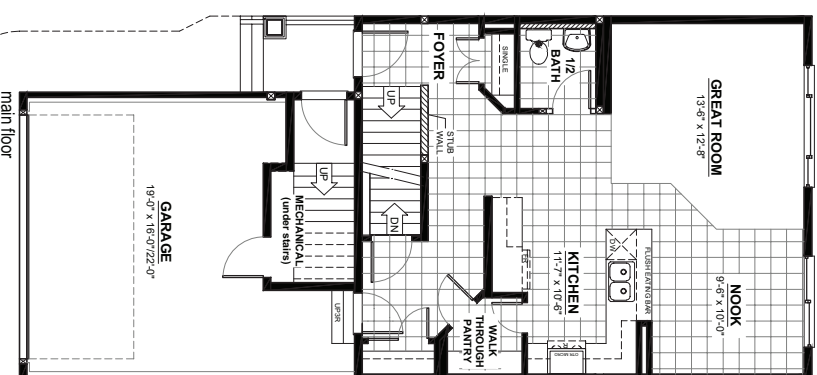
4th BEDROOM • 1,631sq.ft.*

- Fourth bedroom
- Large walk-in closet
- Jack-and-jill main bathroom

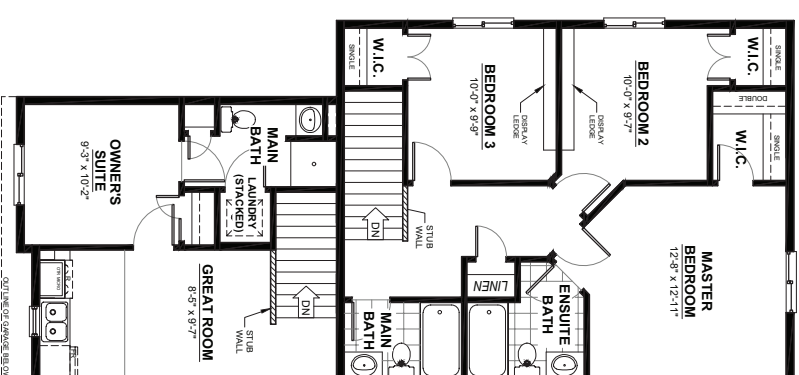


GARAGE SUITE • 1,816sq.ft.*

- 413sq.ft. one room suite
- Private exterior entry



- Stacking laundry closet
- 3 piece ensuite



*Total Developed Area