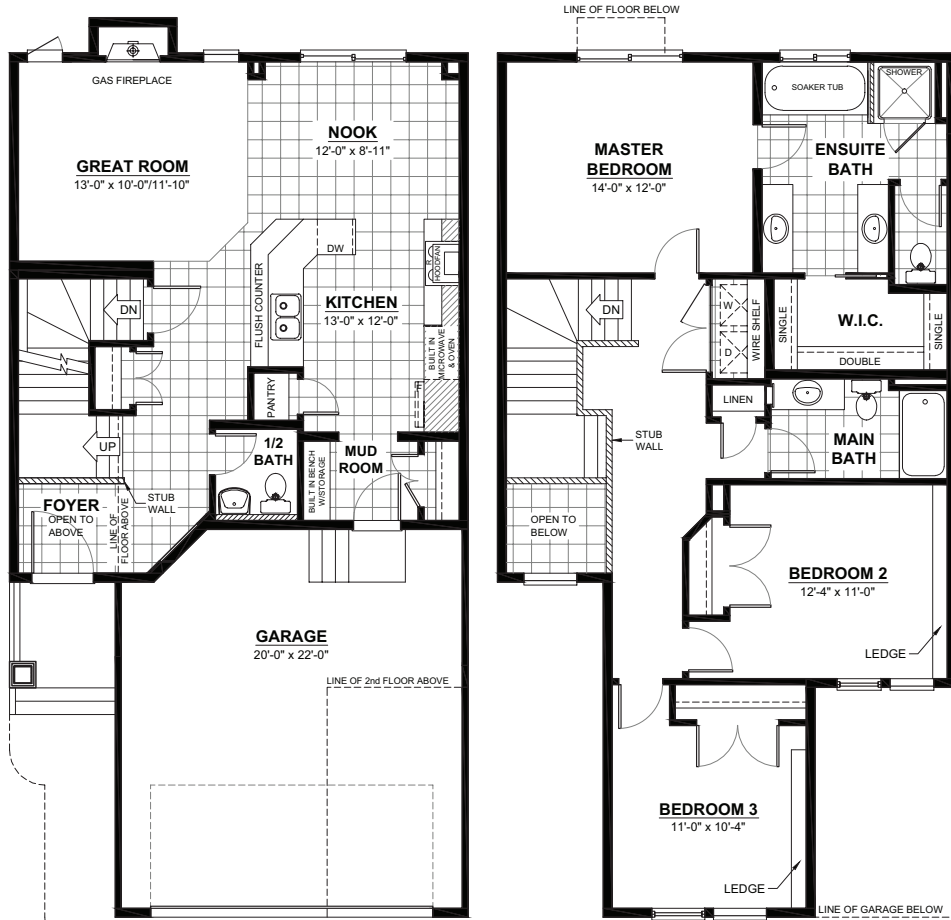


THE MELBOURNE C

2 STOREY · 1,693sq.ft.



FEATURES

- 3 bedrooms
- 2½ baths
- 5 piece ensuite
- Gourmet Kitchen
- Great room with modern gas fireplace
- Built-in desk with storage
- Large walk-in closet



MAIN FLOOR
730sq.ft.
(9FT. CEILINGS)



2ND FLOOR
963sq.ft.
(8FT. CEILINGS)