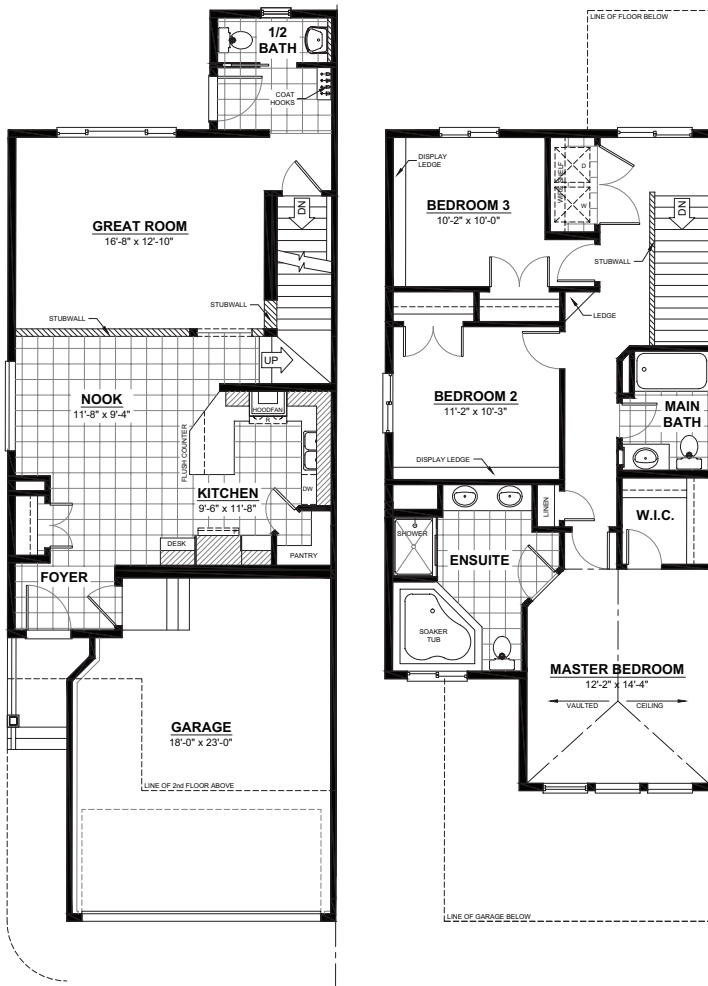


THE FUSHUN II A2

2 STOREY · 1,629sq.ft.



MAIN FLOOR
759sq.ft.
(9FT. CEILINGS)



2ND FLOOR
870sq.ft.
(8FT. CEILINGS)

FEATURES

- 3 bedrooms
- 2½ bathrooms
- Second floor laundry
- 5-piece ensuite
- Double-car garage
- Vaulted master bedroom
- Walk-in closet

THE FUSHUN II A3

2 STOREY · 1,642sq.ft.



MAIN FLOOR
759sq.ft.
(9FT. CEILINGS)



2ND FLOOR
883sq.ft.
(8FT. CEILINGS)

FEATURES

- 3 bedrooms
- 2½ bathrooms
- Second floor laundry
- 5-piece ensuite
- Double-car garage
- Vaulted master bedroom
- Walk-in closet