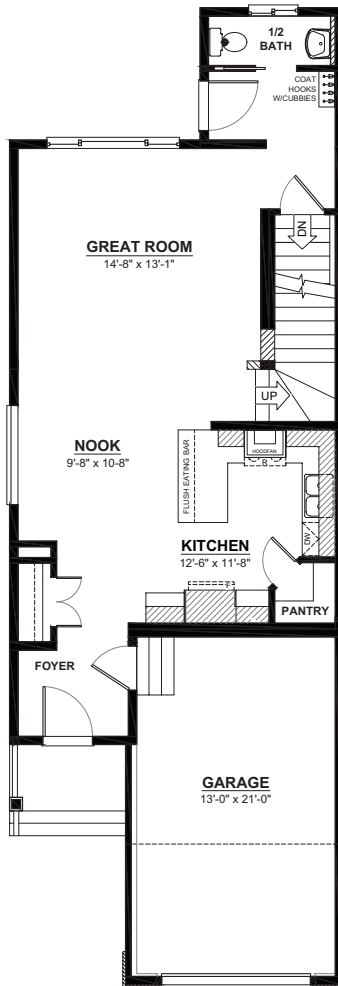
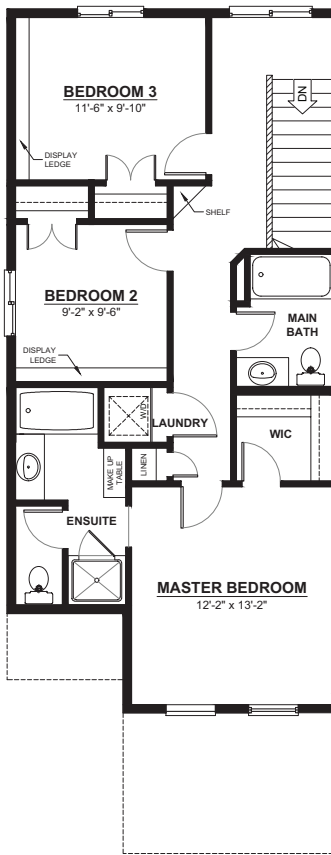


THE FUSHUN G1

2 STOREY · 1,526sq.ft.



MAIN FLOOR
718sq.ft.
(9FT. CEILINGS)



2ND FLOOR
808.ft.
(8FT. CEILINGS)

FEATURES

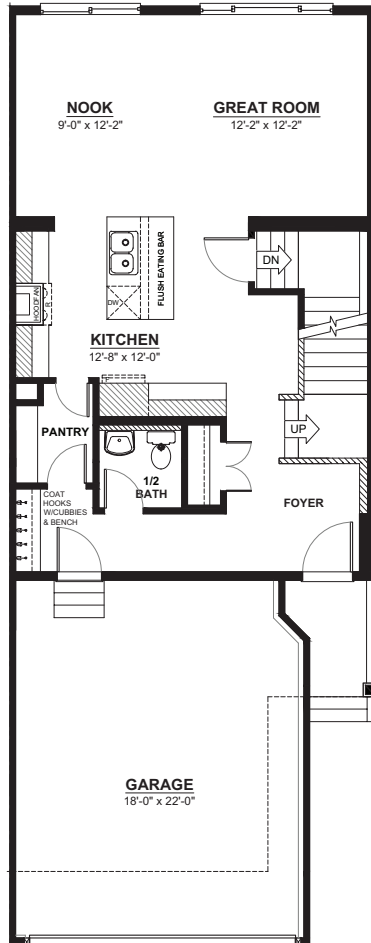
- 3 bedrooms
- 2½ bathrooms
- Second floor laundry
- Gourmet kitchen
- Walk-in closet

This plan is the property of City Homes. All rights reserved, including the right of reproduction in whole or in part. Dimensions shown are approximate and are subject to change. Please consult your City Homes Sales Consultant.

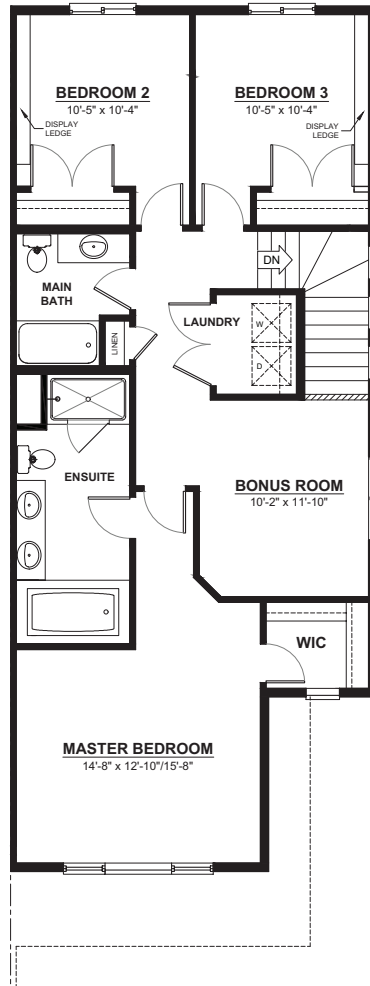
◆ Revised January 16, 2020


CITY HOMES
MASTER BUILDER

THE CAMBRIDGE II G1 2 STOREY · 1,835sq.ft.



MAIN FLOOR
759sq.ft.
(9FT. CEILINGS)



2ND FLOOR
1,076.ft.
(8FT. CEILINGS)

FEATURES

- 3 bedrooms
- 2½ bathrooms
- 5 piece ensuite
- 2nd floor laundry
- Master walk-in closet
- Walk through pantry



CITY HOMES
MASTER BUILDER

This plan is the property of City Homes. All rights reserved, including the right of reproduction in whole or in part. Dimensions shown are approximate and are subject to change. Please consult your City Homes Sales Consultant.
◆ Journeyman Certificate Homes ◆ Revised January 16, 2020