

# WELLINGTON

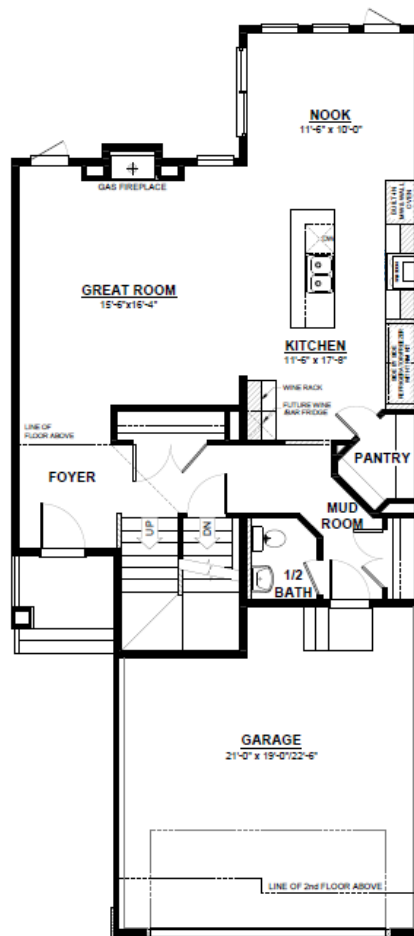
FRONT ATTACHED 28'  
SINGLE FAMILY HOME

2,261 SQ FT  
3 Bedroom  
2.5 Bathrooms



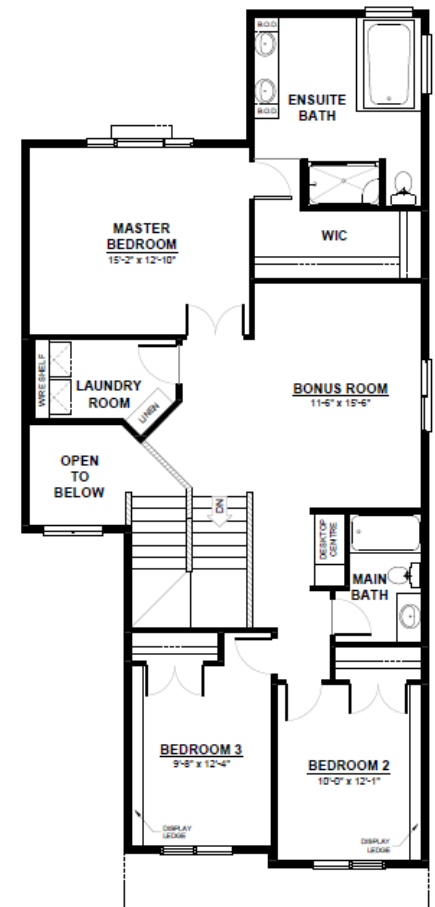
## FEATURES

- 2 Storey
- 2nd Floor Laundry
- Quartz Countertops Throughout
- Large Walk-in Pantry
- Massive Chefs Kitchen with Built in Oven & Microwave
- Extended Cabinetry for Additional Kitchen Space
- Gas Fireplace with Build out in Great Room
- Front Entrance Open to Below
- 2nd Floor Bonus Room
- 2nd Floor Desktop Centre
- Oversized Master Bedroom
- 5 Piece Ensuite with Walk-in Closet



## MAIN FLOOR

978 SQ.FT  
(9 FT. CEILINGS)



## 2ND FLOOR

1,283 SQ.FT  
(8 FT. CEILINGS)



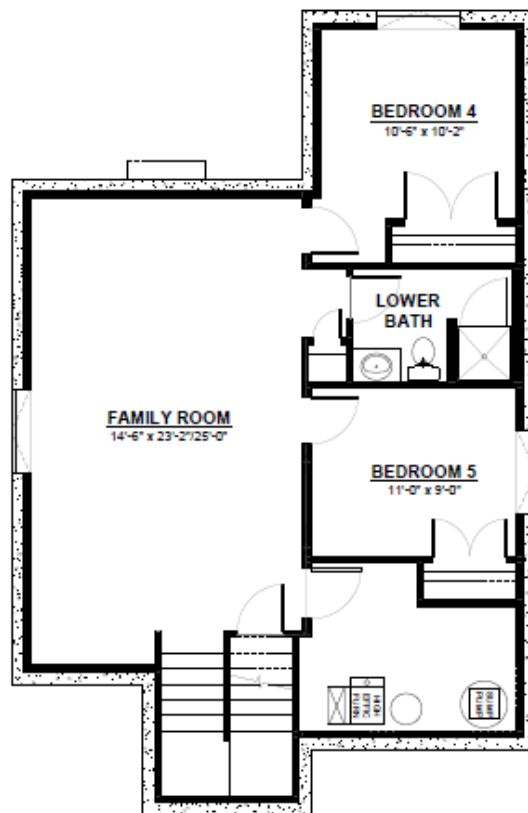
CITY HOMES

This plan is property of City Homes. All rights reserved, including the right of reproduction in whole or in part. Image shown is an artist rendering, dimensions shown are approximate and are subject to change. Square footage may vary based on elevation. Please consult your City Homes Sales Consultant. Blacklines revised August 31st, 2021.

# WELLINGTON

## OPTIONAL BASEMENT

2 Additional Bedrooms  
Large Living Space  
Full Bathroom



## BASEMENT

785 SQ.FT  
(8 FT. FOUNDATION)



This plan is property of City Homes. All rights reserved, including the right of reproduction in whole or in part. Image shown is an artist rendering, dimensions shown are approximate and are subject to change. Square footage may vary based on elevation. Please consult your City Homes Sales Consultant. Blacklines revised August 31st, 2021.