

VIENNA

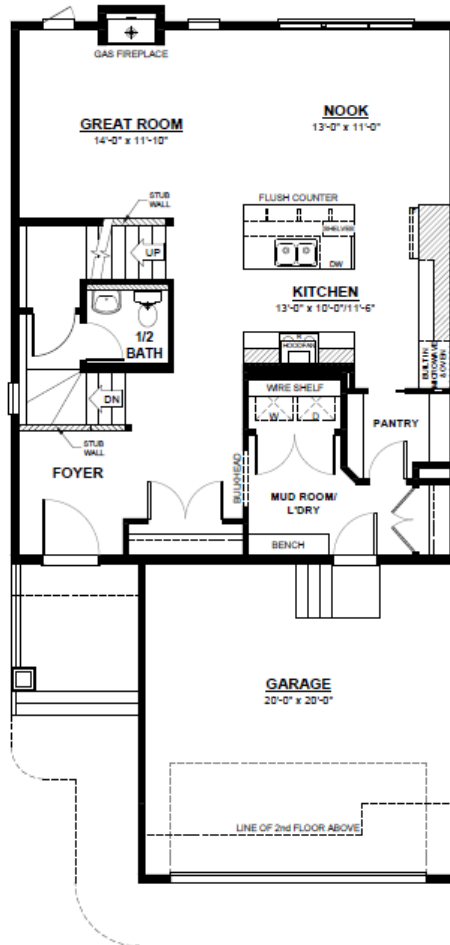
FRONT ATTACHED 28'
SINGLE FAMILY HOME

2,248 SQ FT
4 Bedroom
2.5 Bathrooms



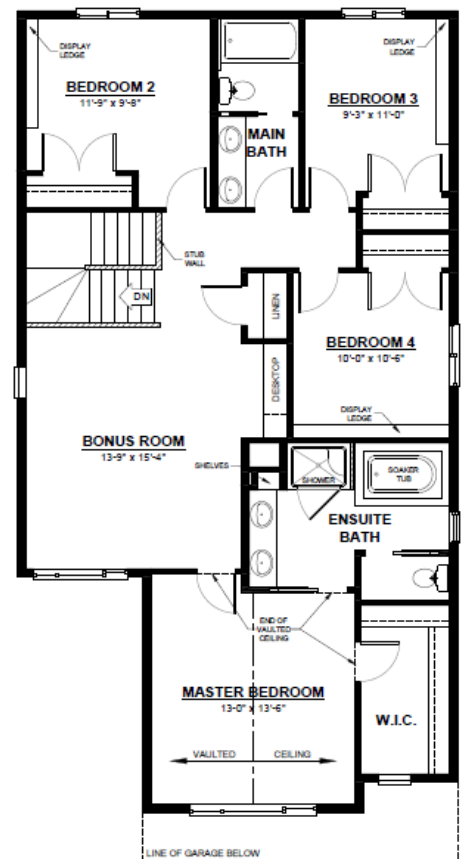
FEATURES

- 2 Storey
- Main Floor Laundry
- Quartz Countertops Throughout
- Large Walk-Through Pantry & Mudroom with Bench & Shelving
- Massive Chefs Kitchen with Built in Oven & Microwave
- Modern Gas Fireplace with built out in the Great Room
- 2nd Floor Bonus Room
- 2nd Floor Built in Desktop & Drawers
- Dual Sinks in Main Bathroom
- Oversized Master Bedroom
- 5 Piece Ensuite with Walk-in Closet



MAIN FLOOR

978 SQ.FT
(9 FT. CEILINGS)



2ND FLOOR

1,283 SQ.FT
(8 FT. CEILINGS)



CITY HOMES

This plan is property of City Homes. All rights reserved, including the right of reproduction in whole or in part. Image shown is an artist rendering, dimensions shown are approximate and are subject to change. Square footage may vary based on elevation. Please consult your City Homes Sales Consultant. Blacklines revised August 31st, 2021.