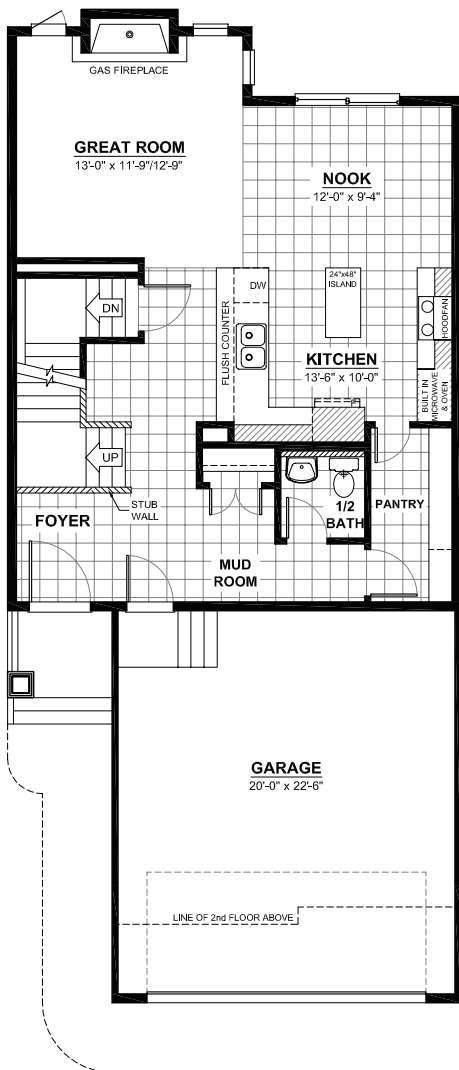
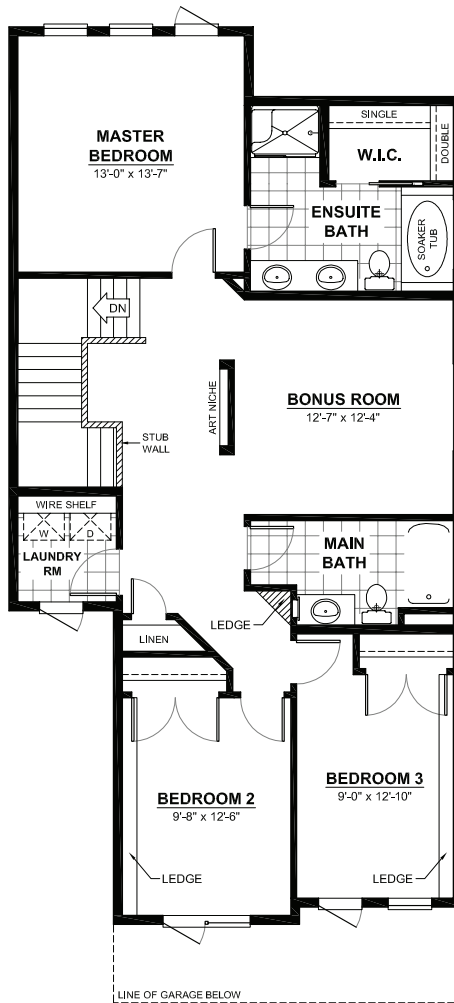


THE TORINO

2 STOREY · 1,935sq.ft.



MAIN FLOOR
823sq.ft.
(9FT. CEILINGS)



2ND FLOOR
1,112sq.ft.
(8FT. CEILINGS)

FEATURES

- 3 bedrooms
- 2½ baths
- 5 piece ensuite
- Gourmet kitchen
- Walk-through pantry
- Spacious bonus room
- Second floor laundry
- Great room with modern gas fireplace

This plan is the property of City Homes. All rights reserved, including the right of reproduction in whole or in part. Dimensions shown are approximate and are subject to change. Please consult your City Homes Sales Consultant.