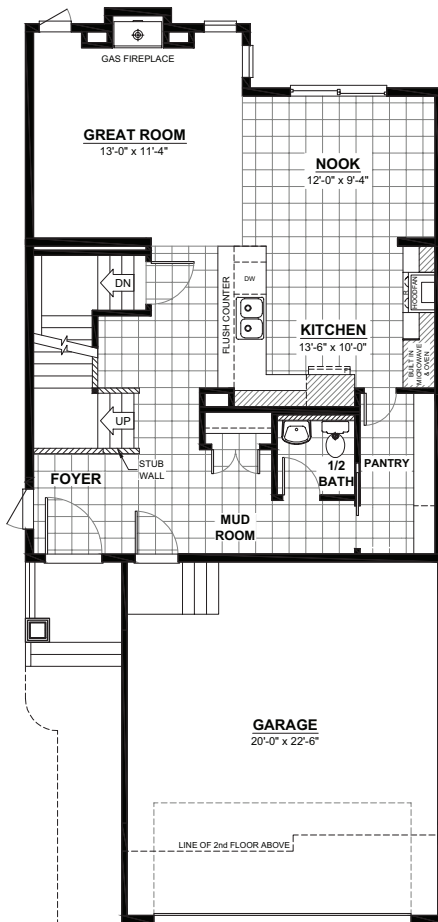
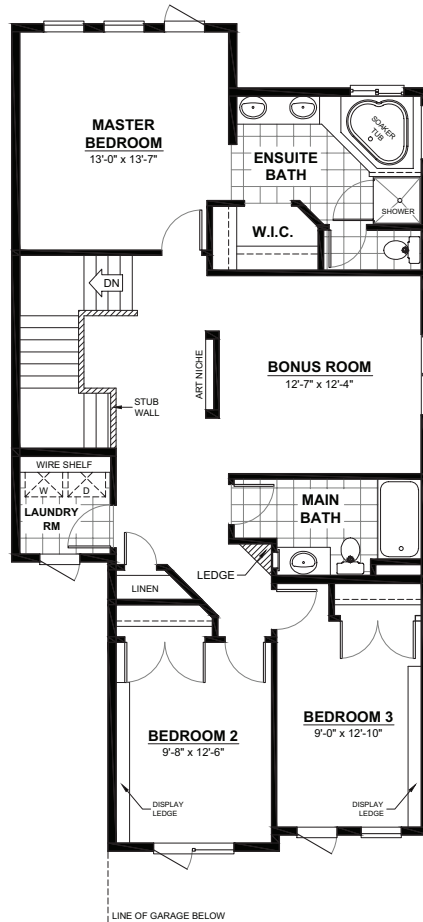


THE TORINO C

2 STOREY · 1,935sq.ft.



MAIN FLOOR
823sq.ft.
(9FT. CEILINGS)



2ND FLOOR
1,112sq.ft.
(8FT. CEILINGS)

FEATURES

- 3 bedrooms
- 2½ baths
- 5 piece ensuite
- Gourmet kitchen
- Walk-through pantry
- Spacious bonus room
- Second floor laundry
- Great room with modern gas fireplace