

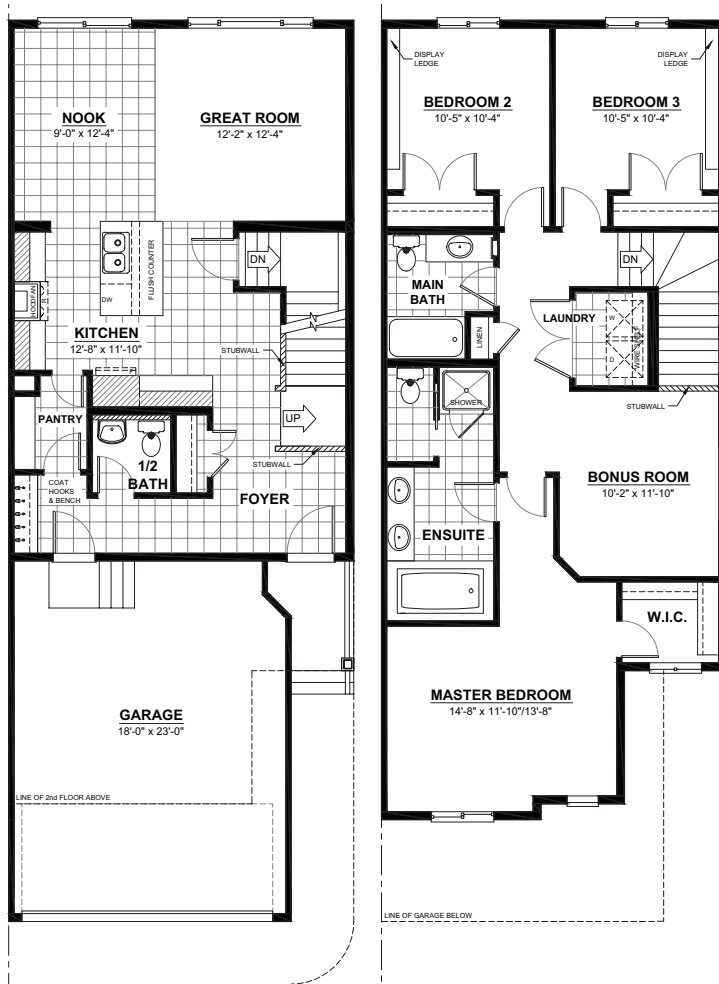
THE CAMBRIDGE II H1 2 STOREY · 1,789sq.ft.



FEATURES

- 3 bedrooms (Optional 4th)
- 2½ bathrooms
- Second floor laundry
- 5-piece ensuite
- Bonus room
- Walk-in closet
- Walkthrough pantry

THE CAMBRIDGE II H2 2 STOREY · 1,768sq.ft.



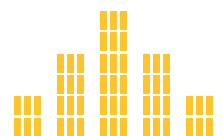
MAIN FLOOR
759sq.ft.
(9FT. CEILINGS)



2ND FLOOR
1,009sq.ft.
(8FT. CEILINGS)

FEATURES

- 3 bedrooms (Optional 4th)
- 2½ bathrooms
- Second floor laundry
- 5-piece ensuite
- Bonus room
- Walk-in closet
- Walkthrough pantry



CITY HOMES
MASTER BUILDER

This plan is the property of City Homes. All rights reserved, including the right of reproduction in whole or in part. Dimensions shown are approximate and are subject to change. Please consult your City Homes Sales Consultant.
◆ Journeyman Certificate Homes ◆ Revised February 1, 2016